

BY-LAWS & REGULATIONS

- The Stewards in each section will settle any disputes arising therein, but the Exhibitor has the privilege of lodging a written protest against any decision thus given which will be dealt with by the committee whose ruling is final.
- Should any exhibitor desire to impact any further information regarding an exhibit to a judge, such information will be imparted per medium of the steward at his/her discretion. The infringement of the Regulation will disqualify the exhibit.
- Should any competitor, exhibitor or employee of such obstruct or abuse a steward or a judge in the execution of his duties he shall be liable to forfeiture of his prize money and shall be excluded from further competition at the show.
- The By-Laws and Regulations of the Queensland Chamber of Agricultural Societies comprised in the model schedule, except where such may be modified or added to by special By-Laws and Regulations comprises herein, shall be the conditions of competition and all exhibitors and competitors shall make their entries or enter into competition on this express condition.
- No entry fees will be refunded unless directed by the stewards. No horse will be allowed to compete unless nomination fees are paid.
- The committee reserves the right to have any item which, in their opinion is considered dangerous or objectionable and which is exhibited or offered to Patrons as an item for sale or a prize given or distributed in any manner, any further reserves the right to immediately cancel space allocation for the current Show period, and/or any further Show held on these grounds.
- No refund of gate money.
- Pavilion will be open
Thursday 24th August
General Exhibits 12pm - 7pm NON perishable exhibits
Fine/Creative Arts 4pm - 7pm
Friday 25th August
General Exhibits 8 am to 12 pm
Fine/Creative Arts 1pm - 4pm
- Pavilion entries are to be collected between 9.30am and 11:00am on the Sunday immediately following the Canungra Show.

ENTRIES

- Entries taken on the day except the Pavilion, Fine Arts Pavilion, Miniature Goats, Stud Cattle, Fat Cattle and Wood-chop. Online entries can be made via the Society's web site www.canungrashowsociety.org. Please refer to appropriate section in the schedule.

WORKPLACE HEALTH AND SAFETY

- **PUBLIC LIABILITY INSURANCE:** All exhibitors, space holders and entertainers are responsible for their own public liability insurance. While the Show Society and its members take every care to ensure the safety to patrons, they will not be held liable for any damage caused by the negligence or property of exhibitors, space holders or entertainers.
- **ELECTRICAL EQUIPMENT:** Any exhibitors/space holders intending to bring electrical equipment and/or gas bottles to the Showgrounds will be required to ensure that such equipment is fitted with earth circuit breakers and that all electrical leads, tools and appliances have been inspected and tagged by a licensed electrical contractor or gas fitter. This is essential for the safety of all exhibitors and the general public and is a requirement of the Workplace Health and Safety Act of 1989. The Act imposes very severe penalties in the event of non-compliance with its provisions. Any exhibitors or space holders who do not comply will not be allowed on the Canungra Showgrounds. Exhibitors should check all electrical equipment and /or gas bottles to avoid the occurrence of any difficulties.
- **LEADERS OF CATTLE:** Exhibitors allowing minors to lead cattle in the Grand Parade do so at their own risk and accept full responsibility for any incident which may occur. The Canungra Show Society or any of its members will not be held liable for any damage or injury which may occur through any such incident.
- **PLANTS:** ALL PLANTS NEED TO BE PEST AND DISEASE FREE OR THEY WILL NOT BE EXHIBITED. No double potting, no pots above 30cm In height and easily lifted by 1 person.



CANUNGRA & DISTRICT COMMUNITY BANK PAVILION

CHIEF PAVILION STEWARDS: Mrs Robyn Mahony, Ph: 07 5543 5528 Rod Duncan Ph: 07 55435 240

ENTRY FEE: \$1 per class. 1st Prize \$5, 2nd Prize \$2 unless otherwise stated.

PAVILION PROCEDURES

1. Pavilion will be open
Thursday 24th August
General Exhibits 12pm - 7pm NON perishable exhibits
Fine/Creative Arts 4pm - 7pm
Friday 25th August
General Exhibits 8 am to 12 pm
Fine/Creative Arts 1pm - 4pm
2. Completed entry forms and fees must accompany exhibits or entries will be refused.
3. Receipts will be given for entries, then must be produced when claiming your exhibits.
4. Exhibits must not have been entered in a previous Canungra show.
5. All exhibits must be the bonafide work of the Exhibitor, grown or made by the Exhibitor unless otherwise stated.
6. Entry fee and prize money are stated at the beginning of each section. Where there is a gift or trophy no prize money will be given. A gift will not be transferable for money.
7. The Judge's decision is final.
8. The Judge need not award any prize to an exhibit, which in their opinion does not comply with the conditions. The Judge shall award a second prize if the exhibit is not considered worthy of a First, and shall not award any prize if the exhibit is not to sufficient merit.
9. Should any exhibitor desire to impart any further information regarding an exhibit to the Judge, such information will be imparted per medium of the steward.
10. The committee reserves the right to refuse any item which in their opinion is considered dangerous or objectionable.
11. The Society will NOT be held responsible for any loss or damage to any exhibit, however, all possible care will be taken.
12. Exhibits for sale must be marked 'for sale' on the back of the work. A commission of 20% will go to the society for all work sold.
13. Signatures of artwork will be covered
14. It is possible not all artwork will be displayed.

COLLECTION OF ENTRIES

15. The pavilion will be open for public viewing on Saturday from 9.00am until 7.00pm.

16. All exhibits must remain on show until the close of the show. No entries will be given out on Saturday.
17. No responsibility will be taken for entries not collected before 11:00am on Sunday.
18. The Collection of entries will be between 9:00am to 11:00am on SUNDAY IMMEDIATELY FOLLOWING THE CANUNGRA SHOW
19. Prizes not collected on the Sunday morning after the show will be held for 1 (one) month, after this they will be forfeited back to the show society.
20. Alternate arrangements may be made by contacting the Chief Steward.

CHAMPION EXHIBITOR OF THE PAVILION (ALL SECTIONS) will receive a Society Sash, Prize and Perpetual Trophy. Prize donated by O'Reilly's Rainforest Guesthouse

This Perpetual Trophy must be returned to the Show Society prior to this year's Show

- CHAMPION EXHIBIT IN EACH SECTION - Society sash & \$20.
- MOST SUCCESSFUL EXHIBITOR IN EACH SECTION - Society sash & \$20. Class winners receive prize (stated at the beginning of each section) and certificate.



Specialising in Hunting, Outdoors and Bird and Wildlife Mitigation Products.
www.thegunshedqld.com.au

CANUNGRA & DISTRICT COMMUNITY BANK PAVILION

Pavilion Adult

CHIEF PAVILION STEWARDS: Mrs Robyn Mahony, Ph: 07 5543 5528 Rod Duncan

Ph: 07 55435 240

ENTRY FEE: \$1 per class. 1st Prize \$5, 2nd Prize \$2 unless otherwise stated.

- Pavilion will be open
Thursday 24th August
General Exhibits 12pm - 7pm NON perishable exhibits
Fine/Creative Arts 4pm - 7pm
Friday 25th August
General Exhibits 8 am to 12 pm
Fine/Creative Arts 1pm - 4pm

PAVILION PROCEDURES

- Completed entry forms and fees must accompany exhibits or entries will be refused.
- Receipts will be given for entries, then must be produced when claiming your exhibits.
- Exhibits must not have been entered in a previous Canungra show.
- All exhibits must be the bonafide work of the Exhibitor, grown or made by the Exhibitor unless otherwise stated.
- Entry fees and prize money are stated at the beginning of each section. Where there is a gift or trophy no prize money will be given. A gift will not be transferable for money.
- The Judge's decision is final.
- The Judge need not award any prize to an exhibit, which in their opinion does not comply with the conditions. The Judge shall award a Second Prize if the exhibit is not considered worthy of a First, and shall not award any prize if the exhibit is not of sufficient merit.
- Should any exhibitor desire to impart any further information regarding an exhibit to the Judge, such

information will be imparted per the medium of the steward.

- The committee reserves the right to refuse any item which in their opinion is considered dangerous or objectionable.
- The Society will NOT be held responsible for any loss or damage to any exhibit, however, all possible care will be taken.
- Exhibits for sale must be marked "FOR SALE" on the back of the work. A commission of 20% will go to the society for all work sold.
- Signatures of artwork will be covered.
- It is possible not all artwork will be displayed.

COLLECTION OF ENTRIES

- The pavilion will be open for public viewing on Saturday from 9.00 am until 7.00 pm.
- All exhibits must remain on show until the close of the show. No entries will be given back on Saturday.
- No responsibility will be taken for entries not collected before 11:00 am on Sunday.
- The collection of entries will be between 9:00 am -11:00 am on SUNDAY IMMEDIATELY FOLLOWING THE CANUNGRA SHOW (Please show receipt).
- Prizes not collected on the Sunday morning after the show will be held for 1 (one) month, after this they will be forfeited back to the show society.
- Alternate arrangements may be made by contacting the Chief Steward.

CHAMPION EXHIBITOR OF THE PAVILION (ALL SECTIONS) will receive a Sash, Prize and Perpetual Trophy. Prize donated by O'Reilly's Rainforest Guesthouse.

This Perpetual Trophy must be returned to the Show Society prior to this year's Show

- CHAMPION EXHIBIT IN EACH SECTION - Sash & \$20.
- MOST SUCCESSFUL EXHIBITOR IN EACH SECTION - Sash & \$20. Class winners receive prize (stated at the beginning of each section) and certificate.



www.scenicwaterservices.com.au

Domestic and commercial -

10,000 to 13,000lt

Certified water cartage • Fully insured



Friendly service - call Shane - 0409 844 321

SCENIC WATER SERVICES

CANUNGRA & DISTRICT COMMUNITY BANK PAVILION

Section 1 - Vegetables & Fruit

Steward - Kelly Pickering

- All produce must be the production of the exhibitor.
- Where plates are mentioned, please use disposable plates - 6" (15cm).
- Classes are judged on quality and display techniques.
- Root vegetables must have tops attached.
- Please read entry conditions carefully and refer to the Pavilion Procedures at the beginning of the Pavilion Section.
- CHAMPION EXHIBIT - Prize & Sash. Prize sponsored by Ampol Canungra
- MOST SUCCESSFUL EXHIBITOR- Prize & Sash. Sponsored by My Country Escape

Vegetables

Sponsored by OWL Wholefoods

- Class 500 Beans - 1 plate (12)
- Class 501 Beetroot - 1 plate (3)
- Class 502 Broccoli - 1 plate
- Class 503 Cabbage - 1 (any variety)
- Class 504 Carrots - 3 (Any Variety or Colour)
- Class 505 Cauliflower - 1 (any variety)
- Class 506 Celery - 1 bunch
- Class 507 Eschallots - 1 bundle
- Class 508 Lettuce - 1 (any variety)
- Class 509 Onions - 3 (any variety)
- Class 510 Peas - 1 plate (12)
- Class 511 Potatoes - 3 (any variety)
- Class 512 Pumpkin - 1 (any variety)
- Class 513 Radish - 6
- Class 514 Rhubarb - 6 stalks
- Class 515 Silverbeet - 6 stalks
- Class 516 Spring Onions - 1 bundle
- Class 517 Sweet Potato - (any variety)
- Class 518 Turnips - 3
- Class 519 Collection of Vegetables
- 1st prize \$10 (not less than 6 varieties)
- Class 520 Any other variety not specified

Fruit

- Class 521 Avocados - 3 (any variety)
- Class 522 Bananas - 1 Hand (any variety)
- Class 523 Cape Gooseberries - 1 plate
- Class 524 Grapefruit - 3
- Class 525 Lemonade - 3
- Class 526 Lemons - 3 Bush

- Class 527 Lemons - 3 Smooth Skin
- Class 528 Limes - 3 (any variety)
- Class 529 Mandarins - 3 (any variety)
- Class 530 Macadamia - 1 plate
- Class 531 Oranges - 3 Valencia
- Class 532 Oranges - 3 (any other variety)
- Class 533 Pecan Nut - 1 plate
- Class 534 Passionfruit - 3 (any variety)
- Class 535 Strawberries - 12
- Class 536 Tomatoes -1 Plate (3)
- Class 537 Tomatoes (Cherry) - Plate of 6 (Any Variety)
- Class 538 Collection of Fruit
- 1st prize \$10 (not less than 3 varieties)
- Class 539 Collection of 6 Herbs (cut and identified)
- Class 540 Any other variety not specified
- CHAMPION EXHIBIT Vegetables & Fruit
- Prize & Sash. Prize sponsored by Ampol Canungra

Section 2 - Horticulture

Stewards - Mr Rod Duncan and Wendy Coleman

- All flowers must be grown by exhibitor unless otherwise stated .
- Bottles provided for exhibits for classes.
- Bowl: Round and wider than it is high .
- Vase: Taller than it is wide .
- Collection: Not less than 6 no more than 12.
 - Bunch: 12 to 20 Flowers
- For further information please see Stewards.

Cut Flowers

- CHAMPION CUT BLOOM - Prize Donated by CANUNGRA HAIRDRESSING.
- MOST SUCCESSFUL EXHIBITOR OF HORTICULTURE SECTION - Prize Donated by The Mahony family in memory of Con Mahony
- Class 541 Arum Lilies - 1 cut
- Class 542 Anemone - 3 stems, distinct colours
- Class 543 Azalea - 1 cut
- Class 544 Bougainvillea - 1 cut
- Class 545 Bract 1 cut e.g. Statice
- Class 546 Iris 1 cut
- Class 547 Jonquil 1 cut
- Class 548 Tulip 1 cut
- Class 549 Tulip - 3 Stems Distinct Colours
- Class 550 Bulbous, Tuberos or Rhizomatous Flower
- Class 551 Calendulas - 3 Blooms, distinct colours
- Class 552 Carnation - 1 Bloom

CANUNGRA & DISTRICT COMMUNITY BANK PAVILION

Class 553 Camellia - 1 Bloom
Class 554 Daffodil - 1 Bloom
Class 555 Daisies - Collection 1 variety
Class 556 Daisies - Collection
Class 557 Flowering Shrub - 1 cut
Class 558 Flowering Creeper - 1 Cut
Class 559 Flowering Tree (other than native) - 1 Cut
Class 560 Geraniums - Ivy leaf - 3 stems - distinct colours (with leaves)
Class 561 Pelargoniums/Geraniums - Collection
Class 562 Gerbera - Single - 3 stems distinct colours
1st Prize \$10 sponsored by The Blue House
Class 563 Gerbera - Double - 3 stems distinct colours
Class 564 Lavender - 1 Bunch - 10-20 stems
Class 565 Lavender Collection - Mix of colours
Class 566 Nasturtium - Collection
Class 567 Native Shrub or Tree - 1 Cut
Class 568 Native Shrub - Collection - 3 Types of Native Shrub
Class 569 Orchid - King 1 Cut
Class 570 Orchid - Crucifix 1 Cut
Class 571 Orchid - Cymbidium - 1 cut
Class 572 Pansy - 1 bloom
Class 573 Pansy - 3 stems distinct colours
Class 574 Petunias - Single collection
Class 575 Petunias - Double collection
Class 576 Phlox - Collection
Class 577 Ranunculi 1 Bloom
Class 578 Ranunculi - 3 stems distinct colours
Class 579 Rose - 1 bloom
Class 580 Rose - 3 stems distinct colours
Class 581 Rose - 1 variety in three stages (Does not have to be off same stem.)
Class 582 Rose - Miniature - 1 bloom
Class 583 Rose - Miniature - 3 stems distinct colours
Class 584 Rose - Miniature - 1 variety in three stages (Does not have to be off same stem.)
Class 585 Snap Dragon - 1 cut
Class 586 Snap Dragon - 3 stems distinct colours
Class 587 Stock - 1 cut
Class 588 Stock - 3 cuts distinct colours
Class 589 Strelitzia - 1 Cut
Class 590 Sweet Peas - 3 stems distinct colours
Class 591 Violets - Bunch
Class 592 Any other Flower not already described- 1 cut

(Flower must not have a class with 3 stems in distinct colours)

Champion Cut Bloom

- Prize Donated by CANUNGRA HAIRDRESSING.

Class 593 Poppy single bloom

Class 594 Poppy - 3 stems MUST BE DIFFERENT COLOURS

Floral Art

Sponsored by Lydia's Garden

- Flowers in the following classes not necessarily grown by exhibitor.
- CHAMPION FLORAL ART EXHIBIT - Prize Donated by D & V Finch.

Class 595 Bowl of cut flowers - arranged for effect

Class 596 Dried Arrangement - natural material

Class 597 Arrangement of Foliage Material - No flowers (If any flowers are present in the arrangement, entry will be disqualified.)

Best Foliage \$25 prize

Class 598 Modern arrangement

(A contemporary design expressing current trends and ideas)

Class 599 Black & White arrangement - Flowers & Accessories

Class 600 Floral arrangement in novelty container (Container may only have 1 (one) opening for flowers.)

Class 601 One colour Arrangement

One colour in different shades/tones.

Class 602 Arrangement using natives

Class 603 Arrangement using only roses

Class 604 Arrangement depicting Spring

CHAMPION EXHIBIT - Floral Art

Prize Donated by D & V Finch.

Class 605 Arrangement depicting a Song - labelled

Class 606 Decorative Basket - viewed from all sides

Class 607 Miniature arrangement

(not to exceed 7cm high by 11cm wide)

Class 608 Shoulder Spray - displayed on saucer)

Entries not displayed on a saucer will be disqualified)

Class 609 Arrangement of Cottage Garden Flowers

Foliage and Receptacle Plants

Sponsored by Lydia's Garden

Prizemoney: 1st \$5, 2nd \$3, 3rd \$2.

Best Foilage \$25

Class 610 Fern or Fern Ally

CANUNGRA & DISTRICT COMMUNITY BANK PAVILION

Class 611 Palm

Class 612 Anthurium/Philodendron

Class 613 Begonia

Class 614 Succulent/Cacti

Class 615 Collection of Succulents/Cacti in a bowl for effect.

(No less than 6 different succulents/cacti.

Rocks and pebbles can be used for filling effect.

Small decorative items allowed, excessive or oversized will result in disqualification.)

Class 616 Bromeliad

Class 617 Any other foliage plant

Class 618 Plant in bloom

Class 619 Pot of Flowering Plants

Class 620 Bonsai

Class 621 Hanging basket

Orchids

Sponsored by Beaudesert & District Orchid and Foliage Society.

Prizemoney: 1st \$5, 2nd \$3, 3rd \$2.

Class 622 Native orchid

Class 623 Cymbidium

Class 624 Cattleya

Class 625 Any other Orchid not provided for

Class 626 Hanging basket of orchids in bloom

Other Plants

Class 627 Azalea in bloom

Section 3 - Cookery & Home Produce

STEWARDS - Mrs V Finch and Mrs K Moriarty

Exhibits to be exhibited on a disposable plate provided by the exhibitor.

NOTE TO EXHIBITORS – entries are to be presented as instructed. Do not add personal touches such as decorations unless instructed (eg iced top means only the top is iced, not sides and no decorations). Deviation from instructions will result in disqualification.

MOST SUCCESSFUL EXHIBITOR - Cookery - Prize and Sash - Sponsored by Marilyn Tynan

Judges Choice Award - Rosette sponsored by Linda Ashton



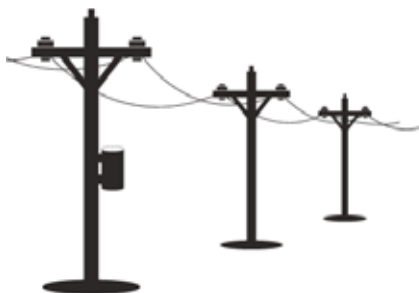
GEIGER

JAMES GEIGER ELECTRICAL PTY LTD

Your local electrician for all aspects of electrical needs

**Property Poles
Undergrounds**

**Residential
Commercial
Agricultural**



0402 192 897

CANUNGRA & DISTRICT COMMUNITY BANK PAVILION

Baking

Class 628 Dark Rich Fruit Cake

1st \$70; 2nd \$20; 3rd \$10. Sponsored by Canungra Craft Group

Class 629 Boiled Fruit Cake

1st Prize \$25 - Donated by Melville family.

Class 630 Patty Cakes

(6 iced, no decorations, not muffin size).

Class 631 Six Plain Scones

Sponsored by The Cuppa Hut

Class 632 Six Pumpkin Scones

Class 633 Six Pikelets

Class 634 Chocolate Bar Cake (Chocolate iced top)

1st prize \$25. Sponsored by Carol Mahony.

NOT PACKET MIX

Class 635 Orange Bar Cake (Iced on top only decorated with orange peel)

Sponsored by The Cuppa Hut

Class 636 Banana Bar Cake with Lemon Icing on top.

Lemon cream cheese icing.

No decoration.

Class 637 Carrot Cake (Round tin - no fruit, iced top)

Vanilla cream cheese icing.

No decoration.

Walnuts allowed.

Class 638 Tea Cake (Plain, Cinnamon Sugar Top)

First Prize \$20 donated by My Country Escape

Class 639 Decorated Birthday Cake (any theme)

1st \$20, 2nd \$10, 3rd \$5. Gift voucher donated by My Country Escape

Class 640 Shortbread (Plate marked in eight portions)

Shortbread fingers will be disqualified

Class 641 Muffins - Savoury (6 - not packet mix)

Class 642 Muffins - Sweet (6 - not packet mix)

Class 643 Slice (any variety)

Slice Variety Must be labeled.

Class 644 Anzac Biscuits (6)

Class 645 Selection of Biscuits - 6 Biscuits (3 varieties 2 of each)

3 Varieties ie, Cornflake, Melting Moments, Jam Drops, Gingersnaps

Class 646 Date bar

SPONSORED by Cuppa Hut

Class 647 Round Chocolate Cake Iced

First Prize gift voucher \$10 Sponsored by My Country Escape

Chocolate icing any variety. NOT PACKET MIX

Round Chocolate Cake Iced - \$50

Class 648 Plain Scones (Plate of 6)

First Prize gift voucher \$10 Sponsored by My Country Escape

Plain scones - \$50

Class 649 Vegan Chocolate Cake

Must Be Iced on top

Sweets

• Judged on quality and display.

Class 650 French Jellies - 6 (dusted with castor sugar)

Class 651 Coconut Ice - 6

Class 652 Marshmallows - 3 Plain, 3 Toasted

Class 653 Rocky Road - 6

Class 654 Fudge - Chocolate - 6

Can be soft or hard in nature.

Class 655 Fudge - Caramel - 6

Can be soft or hard in nature.

Class 656 Rum Balls - 6

Class 657 Apricot Balls - 6

Class 658 Home Made Chocolate (plain) - 6

Class 659 White Christmas - 6

Class 660 Butterscotch - 6

Class 661 Peanut Brittle - 6

MOST SUCCESSFUL EXHIBITOR COOKERY - \$20

Classes 626 to 647 - \$20 and Sash -

Class 662 Any other Sweet not already accounted for

Class 663 Box of Mixed Sweets Selection for display 12 Pieces (Presented in a box. 4 different sweets.)

CHAMPION EXHIBIT - Cookery - \$20

Home Produce

Sponsored by My Country Escape

• JAMS AND PRESERVES - NOTE: Jars must not be less than 250 grams and not more than 500 grams.

Please label jars clearly Pickles, Chutneys and Sauces must have PLASTIC LIDS. No wax on top of jars. No covered tops.

• MOST SUCCESSFUL EXHIBITOR Classes 1167 to 1182 - Gift voucher and Sash donated by My Country Escape

Class 664 Marmalade - any variety

Class 665 Strawberry Jam

1st Prize \$15. Donated by Cafe Metz

Class 666 Jar of any other Jam

Please label variety.

Class 667 Jar of any other Jelly

CANUNGRA & DISTRICT COMMUNITY BANK PAVILION

Please label variety.

Class 668 Lemon Cheese or Butter

Class 669 Jar of any other Cheese or Butter

Please label variety.

Class 670 Jar of any other Relish or Chutney

Please label variety.

Class 671 Jar of Tomato Chutney/Relish

Class 672 Sweet Mustard Pickles

1st Prize \$15.

Class 673 Pickled Onion (no garnishing)

Class 674 Pickled Vegetables (no garnishing)

Class 675 Bottle of fruit preserves

Class 676 Bottle of any variety sauce

Class 677 Honey - Jar

Class 678 Hen eggs - One dozen (judged on consistent size and colour)

Class 679 Eggs - One dozen - Any other variety (please name variety)

Home Brew

- Judged on quality
- Home Brews to be presented in either a Tally size (no more than 750ml) or 4 x Stubbies (375ml)

Class 680 Novice Beer

Entrant MUST not have previously won at a show for any brew they have made.

Class 681 Beer - Ale

Class 682 Beer - Lager

Class 683 Beer - Stout

Class 684 Ginger Beer

Class 685 Cider

Class 686 White Wine

Class 687 Red Wine

Class 688 Liqueur

Class 689 Spirits - Any Variety

Class 690 Any Brew - Not Catered for

Section 4 - Needlework

STEWARD - Ms. M Lynch and Mrs Carmelle Gricks

- All classes are open to all exhibitors.
- All work must be the work of the exhibitor, not more than 12 months old or previously worn.
- Any exhibit washed will be disqualified . Please do not mount work.
- Novice machine embroidery must have never entered a machine embroidery class previously.
- CHAMPION EXHIBIT - Prize Gift Voucher and Sash Sponsored by My Country Escape

- MOST SUCCESSFUL EXHIBITOR - Prize Gift Voucher and Sash Sponsored by My Country Escape

Knitting and Crochet

Class 691 Infants knitted or crochet 3 piece wool outfit

Class 692 Set 3 pairs knitted or crochet booties

Class 693 Infants knitted jacket

Class 694 Knitted Adults Garment

Class 695 Knitted Childs Garment

Class 696 Crochet Wool Rug

Class 697 One Handkerchief with Crochet edge or corner

Class 698 Kitchen or Hand Towel with crochet edge

Class 699 Crochet table centre or runner

Class 700 Knitted or crochet shawl

Class 701 Doll in knitted or crochet outfit

Class 702 Soft toy knitted or crochet

Embroidery

Class 703 Embroidered or Cross Stitch article (doily or runner only)

Class 704 Embroidered or Cross Stitch 3 piece duchess set

Class 705 Machine Embroidery

Class 706 Novice Machine Embroidery

Entrant must have not previously entered an embroidery class.

Entry to be NO larger than a standard Tea Towel.

Class 707 Any other embroidery not provided for.

Class 708 Article of Cross Stitch - framed

Class 709 Article of Long Stitch - framed

Class 710 Article of Tapestry - framed

Class 711 Article of Ribbon Embroidery

Class 712 Article of Smocking

Sewing

Class 713 Clothing made using machine

Class 714 Article of Stretch Sewing

Class 715 Article made from Patchwork excluding quilting

Class 716 Article featuring Applique

1st Prize donated by Canungra Art and Culture Group.

Class 717 Quilt - made entirely by the exhibitor (patchwork, quilting etc)

The winner of this class is eligible to represent Canungra AH&I Society in the Quilts Across

Queensland Open Representative Class at the Royal Queensland Show.

CANUNGRA & DISTRICT COMMUNITY BANK PAVILION

CHAMPION Quilt - \$20

Rosette and \$20. Sponsored by The Blue House

Class 718 Beginners Quilt

Entrant must not have entered previously in any quilting classes

Class 719 Beginners Quilted item - table runner, stocking, cushion cover

Entrant must not have entered in any quilting sections

Class 720 Article featuring Applique Detached

1st Prize \$10 Donated by Canungra Art & Cultural Group

Miscellaneous

Class 721 Soft toy - cloth or felt

Class 722 Jointed Teddy Bear

First prize \$10 sponsored by Canungra Art and Craft Group

Class 723 Best dressed doll

Class 724 Christmas decoration

Class 725 Dress or coat hanger - covered

Class 726 Hand or Machine Hand Bag

Sponsored by The Shoe Vault (voucher/product)

Class 727 Any other article not provided for

Class 728 Diamond Art Painting

(Must Be Framed)

For Persons Over Age 65 Years

Class 729 Any Knitted Article

Sponsored by The Blue House \$10

Class 730 Any Crochet Article

Class 731 Any Article of Machine Sewing

Class 732 Any other Article

Most Successful Exhibitor - prize donated by Beautiful Batches

Section 5 - Amateur Photography

Steward - Emily Livingston

Sponsored by My Country Escape

- Each entry to be mounted on card board wider and longer than the photograph, eg. Photo 15 x 10 cm (6 x 4 inches) mounted on cardboard 18 x 13 cm (7 x 5 inches).
- Entries Must Not be framed. Maximum 5 entries per class per exhibitor.
- All entries to be the work of the exhibitor and not previously entered in the Canungra Show.
- Name, section & class to be clearly marked on back of entry.
- NO NAMES TO BE ON FRONT OF PHOTOGRAPHS
- The judges and stewards have the right to reject any entry where subject matter is considered unacceptable.
- Class 731 to 741 - Photos to be 15 x 10 cm (6 x 4 inches)
- Classes 736 & 737 - Photos to be mounted on same board

CHAMPION EXHIBITOR - Prize gift voucher & Sash donated by My Country Escape.

MOST SUCCESSFUL EXHIBITOR - Prize gift voucher & Sash donated by My Country Escape

ENTRY FEE: \$1.

1st Prize \$5, 2nd Prize \$2 unless otherwise stated.

Amateur Photography

Class 733 Flora Study

Class 734 Animal/Fauna Study

Class 735 Farm Buildings or Equipment

Class 736 Child Study

Class 737 Portrait



*Proudly supporting the
Canungra Show*

House Pads • Laser Levelling • Roads • Drains

• Supply & Build Bush Rock Walls •

Driveways • Clearing • Excavations • Dams • Soils • Gravels

Steven 0408 943 940 Email: sacfinch05@gmail.com

CANUNGRA & DISTRICT COMMUNITY BANK PAVILION

Class 738 Group of four photos - any topic, same theme
1st Prize Gift voucher donated by My Country Escape

Class 739 Group of four photos - portrait or child study
mounted on same board

Class 740 Scenic Rim Location

1st Prize Gift voucher donated by My Country Escape

Class 741 Black & White

Class 742 Sunset or Sunrise

Class 743 Weather Conditions

Enlargements (Any Size) Mounted

Class 744 Flora Study

Class 745 Animal/Fauna Study

Class 746 Land or Seascape

Class 747 Child Study

Class 748 Portrait

Pavilion - Juvenile Section

Stewards – Mrs C Finch, Mrs J Mahony & Mrs B Honeycombe

- MOST SUCCESSFUL EXHIBITOR - awarded to the exhibitor with the most points in respective sections.
- Most Successful Exhibitor – Preschool to Year 3 Section - \$10 Sponsored by My Country Escape
- Most Successful Exhibitor – Year 4 to Year 7 Section - \$10 Sponsored by Catherine's Beauty Room
- Most Successful Exhibitor – Year 8 to Year 12 - \$20 Sponsored by My Country Escape
- Encouragement Award - Gloria Watterson Perpetual Trophy and Prize donated by the family of the late Gloria Watterson.

Judge's Choice Cookery Award - Rosette sponsored by Linda Ashton.

ENTRY FEE \$0.50 per entry. Prizemoney: 1st \$3, 2nd \$1.

- Juvenile Classes are sponsored by D & J Libke, Canungra Visitor Information Centre, Margaret Day, CWA (Wonglepong Branch).

NOTES TO EXHIBITORS – PLEASE READ FIRST

- PLEASE CIRCLE JUVENILE ON ENTRY FORM FOR SECTION 7 – all classes
- Entries will be received between 9am and 1pm on Friday before the Show
- Entries are to be collected on Sunday following the Show between 9am and 11:00am
- All articles not collected by 11:00am on the Sunday may be disposed of unless other arrangements have been made.
- Limit of 2 entries per class
- NO NEW ENTRY CLASSES WILL BE MADE - we only accept work in classes specified.

- NO NAMES are to be put on the FRONT of your work
- COOKERY & FRUIT - to be on disposable plates supplied by the exhibitor
- CAKES - iced tops only – no decorations except where specified
- EGGS - judged on consistent colour and display
- FRAGILE ARTICLES - to be presented on a hard surface (e.g. tray, plate, cardboard)
- ALL PHOTOS to be 15cm x 10cm (6 x 4 inches) or 19cm x 13cm (7 x 5 inches)

Preschool to Year 3

Cooking

Sponsored by My Country Escape

Class 1000 Edible necklace on thread made from sweets

Class 1001 Edible Necklace - Made from Fruit and Veggie on a string

Class 1002 Decorated plain biscuits - 3

Class 1003 Chocolate Crackles - 3

Class 1004 Decorated Boiled Egg

Class 1005 Eggs - 6

Horticulture

Class 1006 Floral arrangement in a vase

Craft

Class 1007 Article of hand sewing

Class 1008 Article of craft

Class 1009 Card any occasion - handmade

First prize \$10

Class 1010 Card any occasion - made using a computer

Class 1011 Lego/Duplo model

- no larger than 45 x 45cm to be presented on a firm base. Must be an original creation and

not a design made from instructions on a box.

Class 1012 Christmas Craft

Class 1013 College

Photography

Class 1014 My Pet

Class 1015 Human face showing emotion - happiness or sadness

Class 1016 Selfie

First prize \$10

Year 4 to Year 7

Cooking

Class 1017 Chocolate Cake - Packet mix

– iced top only - no decoration, no soft icing or frosting, use pure icing sugar.

CANUNGRA & DISTRICT COMMUNITY BANK PAVILION

Class 1018 Pikelets - 3.

Class 1019 Patty Cakes - 3

(iced top - decorated) 1st Prize \$5.

Class 1020 Hen eggs - 6 judged on colour consistency & display

Class 1021 Eggs any other variety - 6 judged on colour consistency & display.

Horticulture

Class 1022 Floral Arrangement in a vase.

Craft

Class 1023 Article of hand or machine sewing.

Class 1024 Article of craft.

Class 1025 Card (any occasion) - handmade.

Class 1026 Card (any occasion) - made using a computer.

Class 1027 Article made from a kit

Class 1028 Article made from recycled items

Photography

Class 1029 My Pet

Class 1030 Human face showing emotion - happiness or sadness

Class 1031 Weather conditions

Class 1032 Selfie

Class 1033 Action or Sport

Year 8 to 12

Cooking

Judges Choice Juvenile Cookery Award - Rosette and \$10 - Sponsored by Linda Ashton

Class 1034 Chocolate Cake - NOT packet cake

(iced top only - no decoration, no soft icing or frosting, use pure icing sugar)

Class 1035 Wonder Cake (Recipe Below)

Sponsored by the Blue House \$5

WONDER CAKE

1 cup sugar 125g butter

2 eggs

6 tablespoons milk

2 cups self-raising flour

1 teaspoon mixed spice

1 teaspoon cinnamon

1 x 375g packet mixed fruit

METHOD:- Place all ingredients in bowl and mix well for 4 minutes. Pour mixture into a greased, round tin and cook in a slow oven (140c) for up to an hour.

First place of \$10 sponsored by The Blue House

Class 1036 Pikelets - 6

Class 1037 Scones Plain - 3

1ST Prize \$5

Class 1038 Hen eggs - 6 judged on colour consistency & display

Class 1039 Eggs any other variety - 6 judged on colour consistency & display

Judge's Choice Juvenile Cookery Award

Rosette and \$10

Horticulture

Class 1040 Floral arrangement in a vase

1st prize \$5 sponsored by The Blue House

Craft

Class 1041 Article of hand or machine sewing

Class 1042 Card any occasion - handmade

First prize \$10

Class 1043 Card any occasion - made using a computer.

Class 1044 Any article of craft

Photography

MOST SUCCESSFUL EXHIBITOR - Junior \$15 Sponsored by My Country Escape

MOST SUCCESSFUL EXHIBITOR - Junior Primary \$20 Sponsored by My Country Escape

MOST SUCCESSFUL EXHIBITOR - Upper Primary \$20 Sponsored by My Country Escape

MOST SUCCESSFUL EXHIBITOR - Secondary \$20 Sponsored by My Country Escape

Class 1045 Action or Sport

Class 1046 Portrait

Class 1047 Black and white print

Class 1048 Weather conditions

Class 1049 Sunset/Sunrise

Class 1050 Selfie

First prize \$20. Sponsored by My Country Escape

Encouragement Award - Gloria Watterson Perpetual Trophy

Gloria Watterson Perpetual Trophy and Prize donated by the family of the late Gloria Watterson.

Most Successful Exhibitor Junior Section - \$5

Most Successful Exhibitor Junior Primary Section - \$10

Most Successful Exhibitor Upper Primary Section - \$10

Most Successful Exhibitor Secondary Section - \$15

MY COUNTRY ESCAPE FINE & CREATIVE ARTS

CHIEF STEWARD: Kate Kinsela Phone: 0432413039

Online Entries accepted at canungrashowsociety.org

ENTRIES CLOSE: Friday, 25th August 2023 at 4:00 pm.
NO LATE entries will be accepted

DELIVERY OF ENTRIES: All fine art and creative art entries are to be delivered by

Thursday 24th August

4.00pm - 7.00pm

Friday 25th August

1.00pm to 4.00pm

Judging will commence for fine & creative arts Friday at 6:00 pm.

Delivery Address: Canungra Show Grounds - 53 Coburg Rd, Canungra

COLLECTION / PICK UP OF ENTRIES: Sunday, 27th August 2023 9 am - 11 am

*Please wait by the first entry (green door) and wait for one of the volunteers to assist you.

*ONE ENTRY FORM PER PERSON - You may photocopy the entry form.

Entry Fee: Fine art and Creative Art Entries are \$3 per entry

JUVENILE FINE ART AND CREATIVE ART ENTRIES ARE \$1 PER ENTRY

PLEASE CIRCLE

Section 7 - Fine Arts

Section 8 - Juvenile Fine Arts

Section 9 - Creative Arts

Section 10 Juvenile Creative Arts

Name.....

Phone No

Address

Email.....

*ENTRY FEES MUST ACCOMPANY ENTRIES
(ALL ENTRIES SUBJECT TO SOCIETY BY-LAWS AND REGULATIONS)*

Section	Class	Description of entry	Size	To Sell Price / NFS	Entry Fee	Sign In	Sign Out
(Example) 7	1250	(Local Novice) Owl painting	16x20 Inches	\$100 or Not for Sale	\$3		

Limit: One item per class per exhibitor & there are size restrictions due to space constraints

Maximum size for entries is A3 and must be mounted on cardboard or canvas and ready to hang

MY COUNTRY ESCAPE FINE ARTS

CHIEF STEWARD: Kate Kinsela Phone: 0432 413039

Entry Fee: Fine art and Creative Art Entries are \$3 per entry

Juvenile Fine art and Creative art entries are \$1 per entry

- Pavilion will be open
Thursday 24th August
General Exhibits 12pm - 7pm NON perishable exhibits
Fine/Creative Arts 4pm - 7pm
- Friday 25th August
General Exhibits 8 am to 12 pm
Fine/Creative Arts 1pm - 4pm
- No entries will be accepted after 4 pm on Friday the 25th of August 2023
- Completed entry forms must accompany every entry or the entry will be refused
- Receipts will be given for all entries and these receipts must be presented on the collection of entries.
- Online entries can be dropped off during the above times, please bring your paperwork.
- The collection of entries will be between 9:00 am and 11:00 am on SUNDAY 27th August 2023. No responsibility will be taken for the works not collected unless a prior arrangement has been made by contacting Kate Kinsela on 0432 413 039
- Paid entries only will be accepted and displayed, with no private display items.
- These sections are open to amateurs and hobbyists only. Sections are not open to professional artists eg: Art Teachers
- Entries must be the bonafide work of the exhibitor.
- Entries must not have been entered into previous Canungra Shows.
- Entry fees and prize money are stated at the beginning of each section unless specified.
- Where there is a gift or trophy no prize money will be given. A gift will not be exchanged for money.
- The judge's decision is final.
- The judge need not award any prize to any exhibit which in their opinion does not comply with the conditions. The judge shall award a 2nd prize if the exhibit is not considered worthy of a first and shall not award any prize if the exhibit does not have sufficient merit.
- Should any exhibitor desire to impart any further information regarding an exhibit to the judge, such information will be imparted per the medium of the Chief Steward.
- The committee retains the right to refuse any items in whose opinion are considered objectionable.
- The Society will not hold itself responsible for any

loss or damage to any exhibit, however, all possible care will be taken.

- Entries available for sale must have the price recorded on the entry form. Please also mark the back of the artwork "FOR SALE".

A commission of 20% will go to the society on all items of work sold.

- All exhibit items will remain on show until the close of the show
- The room will be open for viewing on Saturday 26th August 2023 from 9 am - 7 pm
- Sections 7 & 8 Fine Art items MUST BE FRAMED & WIRED FOR HANGING FROM HOOKS
- It is possible not all artwork will be displayed.

Limit: One item per class per exhibitor & there are size restrictions due to space constraints

Maximum size for entries is A3 and must be mounted on cardboard or canvas and ready to hang.

MUST BE FRAMED AND WIRED FOR HANGING FROM HOOKS

SECTION 7 - FINE ARTS

STEWARD: Kate Kinsela

Entry Fee: \$3. Prize Money: 1st \$10, 2nd \$5 (unless otherwise specified)

CHAMPION EXHIBIT - Sash & Prize - \$50 Donated by THE 4275 COLLECTIVE

MOST SUCCESSFUL EXHIBITOR - Sash & Prize \$20 Donated by ROOM 27 HAIR STUDIO

ENCOURAGEMENT AWARD - Sash & Prize - \$10 Gift Voucher - Donated by MY COUNTRY ESCAPE

Note: Any medium means, the use of any Pencil, Pen, Paint, Charcoal, Crayon, Recycled materials.

Class 1250 LOCAL NOVICE PAINTING - Any Subject - Any Medium

First Prize of \$50 Donated By Katahli Arts

(Open to artists who have been residents of the Scenic Rim Regional Council area

for at least 12 months prior to the date of the show and who have not won first prize at any previous Canungra Show).

Class 1251 PAINTING ANY HERITAGE SUBJECT - Any Medium.

First Prize \$10 Gift Voucher Donated by MY COUNTRY ESCAPE

Class 1252 DRAWING - Any Medium - Medium: Pencil, Pen, Crayon, Charcoal, Mixed Medium

First Prize \$25 Donated by ROOM 27 HAIR STUDIO

Class 1253 WATERCOLOUR PAINTING - Any Subject

First Prize \$50 Donated by BARRY BRODERICK

MY COUNTRY ESCAPE FINE ARTS

Class 1254 PASTEL - Any Subject.

First Prize of \$25 Donated by CATHERINE'S BEAUTY ROOM

Class 1255 OIL PAINTING - Any Subject.

First Prize \$25 Donated by ROOM 27 HAIR STUDIO

Class 1256 LANDSCAPE - Any Medium.

First Prize \$10 Gift Voucher Donated by MY COUNTRY ESCAPE

Class 1257 SEASCAPE OR MARINE - Any Medium.

First Prize \$25 Donated by CONNIE SUTHERLAND

Class 1258 STILL LIFE - Any Medium.

First Prize \$25 Donated by ANNE ROBERTS - SARABAH

Class 1259 PORTRAIT OF A HUMAN FIGURE

First Prize \$25 Donated By KATAHLI ARTS

Class 1260 ANIMALS & BIRDS - Any Medium.

First Prize \$25 Donated by P & L SUTHERLAND

Class 1261 ZENTANGLE -any subject - any medium

First Prize \$25 Donated By KATAHLI ARTS

Class 1262 CONTEMPORARY - ABSTRACT - Any Medium

First Prize \$25 Donated by CANUNGRA BOOKS AND ART

Class 1263 PAINTING - any medium other than canvas

Class 1264 MONOTONE - Any Subject - Any Medium

First Prize \$10 Donated By KATAHLI ARTS

Class 1265 PAINTING OR DRAWING - Any Subject, any medium, by person over 70 years

First Prize is a \$50 GIFT VOUCHER Donated by MY COUNTRY ESCAPE

Class 1266 ART ABILITY (Working with people with disabilities, Individual Art Ability)

Any Subject painting or drawing - Any medium

First Prize \$25 Donated by BRENDAN TYANAN

Class 1267 INDIGENOUS AUSTRALIAN ART

Any Subject, any medium or mixed media (Restricted to Indigenous Australian Entrants)

First Prize \$25 Donated by MARILYN TYANAN

Class 1268 DIGITAL ART - Any Subject

First Prize \$25 Donated by THE BLUE HOUSE

Class 1269 GRAFFITI - Any Subject

First Prize \$10 Donated by ROOM 27 HAIR STUDIO

Class 1270 RECYCLED ART - Any Subject

First Prize \$10 Donated by ROOM 27 HAIR STUDIO and a \$5 Gift Voucher Donated by MY COUNTRY ESCAPE

Class 1271 POP ART - Any Subject

First Prize \$25 Donated by CANUNGRA BOOKS AND ART

Class 1272 MIXED MEDIA - Any Subject and medium

First Prize \$25 Donated by THE BLUE HOUSE

Class 1273 ANY SUBJECT / ANY MEDIUM - not already classified

First Prize Gift Voucher Donated by ROOM 27 HAIR STUDIO & Gift Voucher

Donated by MY COUNTRY ESCAPE



Ray White[®]
CANUNGRA

PROUDLY LOCAL
PROUDLY RAY WHITE CANUNGRA

SALES
INVESTMENT
PROPERTY MANAGEMENT

07 5543 4889 | RAYWHITECANUNGRA.COM.AU

MY COUNTRY ESCAPE FINE ARTS

SECTION 8 - JUVENILE FINE ARTS (UNDER 18 YEARS)

STEWARD: C Sutherland

Entry Fee: 50 cents for ages up to 11 years, and \$1 for ages 12 up to 17 years.

Prize Money: 1st \$3, 2nd \$1 (unless otherwise specified)

CHAMPION EXHIBIT - Sash & Prize - \$25 Donated by The 4275 Collective

MOST SUCCESSFUL EXHIBITOR - Sash & Prize - \$40 Donated by My Country Escape

ENCOURAGEMENT AWARD - Sash & Prize - \$30 Donated by My Country Escape

JUDGES CHOICE - Sash & Prize - \$15 Donated by P & L Sutherland

Limit: One item per class per exhibitor & there are size restrictions due to space constraints

Maximum size for entries is A3 and must be mounted on cardboard or canvas and ready to hang.

Preschool to Year 3

Class 1300 DRAWING any medium

First Prize \$3, 2nd \$1 Donated by WONGLEPONG CWA

Class 1301 PAINTING any medium

First Prize \$3, 2nd \$1 Donated by WONGLEPONG CWA

Class 1302 MIXED MEDIUM or COLLAGE

First Prize \$3, 2nd \$1 Donated by WONGLEPONG CWA

Class 1303 ART ABILITY (Working with people with disabilities, Individual Art Ability) Any subject Painting or Drawing - Any medium

First Prize \$3, 2nd \$1

Class 1304 INDIGENOUS AUSTRALIAN ART - Any Subject, any medium or mixed media

(Restricted to Indigenous Australian Entrants)

First Prize \$3, 2nd \$1

Year 4 to Year 7

Class 1305 DRAWING any medium

First Prize \$3, 2nd \$1 Donated by WONGLEPONG CWA

Class 1306 PAINTING any medium

First Prize \$3, 2nd \$1 Donated by WONGLEPONG CWA

Class 1307 MIXED MEDIUM or COLLAGE

First Prize \$3, 2nd \$1 Donated by WONGLEPONG CWA

Class 1308 ART ABILITY (Working with people with disabilities, Individual Art Ability)

Any subject Painting or Drawing - Any medium

First Prize \$3, 2nd \$1

Class 1309 INDIGENOUS AUSTRALIAN ART - Any Subject, any medium or mixed media

(Restricted to Indigenous Australian Entrants)

First Prize \$3, 2nd \$1

Year 8 to Year 12

Class 1310 DRAWING - Pen, Ink, Pencil, Charcoal, Pastel any subject.

First Prize \$5, 2nd \$2 Donated by D.A & J.A LIBKE

Class 1311 PAINTING - any medium - any subject.

First Prize \$5, 2nd \$2 Donated by D.A & J.A LIBKE

Class 1312 Mixed Medium or Collage - any subject

First Prize \$5, 2nd \$2 Donated by D.A & J.A LIBKE

Class 1313 Zentangle - Any medium - any subject

First Prize \$5, 2nd \$2 Donated by D.A & J.A LIBKE

Class 1314 ART ABILITY (Working with people with disabilities, Individual Art Ability)

Any subject Painting or Drawing - Any medium

First Prize \$10 Donated by KATAHLI ARTS

Class 1315 INDIGENOUS AUSTRALIAN ART - Any Subject, any medium or mixed media

(Restricted to Indigenous Australian Entrants)

First Prize \$10, 2nd \$1 Donated by KATAHLI ARTS

Class 1316 DIGITAL ART - Any Subject

First Prize \$10 Donated by KATAHLI ARTS

Class 1317 GRAFFITI - Any Subject

First Prize \$10 ROOM 27 HAIR STUDIO

Class 1320 RECYCLED ART - Any Subject

First Prize \$10 ROOM 27 HAIR STUDIO

Class 1318 POP ART - Any Subject

First Prize \$10, 2nd \$1 Donated by KATAHLI ARTS

Class 1319 ANY SUBJECT / ANY MEDIUM - not already classified

First Prize \$5 Gift Voucher Donated by MY COUNTRY ESCAPE



ACS Engineers
CIVIL | ENVIRONMENTAL | PROJECT MANAGEMENT

Providing Professional Engineering Services to the Scenic Rim

07 5541 3500
www.acsengineers.com.au

Proud Sponsors of the Canungra Show & Rodeo

MY COUNTRY ESCAPE CREATIVE ARTS

SECTION 9 - CREATIVE ARTS

STEWARD Marilyn Tynan

Entry Fee: \$3. Prize Money: 1st \$10, 2nd \$5 (unless otherwise specified)

CHAMPION EXHIBIT - Sash & Prize - \$50 Donated by THE 4275 COLLECTIVE

MOST SUCCESSFUL EXHIBITOR - Sash & Prize - \$25 Donated by EVE BY NATURE

ENCOURAGEMENT AWARD - Sash & Prize - \$10 Donated by MY COUNTRY ESCAPE

Class 1274 Scrapbooking/Papercraft "off the page" any medium

Class 1275 Sculpture - any medium

1st Prize \$25. Donated by Ann Roberts

Class 1276 Beading-any article

Class 1277 Jewellery handmade

\$25 Donated by Eve By Nature

Class 1278 Pyrography (Wood Burning)

\$25 Donated by Connie Sutherland

Class 1279 Pottery/Ceramics

\$50 Donated by Eve By Nature

Class 1280 Handmade and Decorated Card

\$25 Donated by Eve By Nature

Class 1281 Silversmithing Item

\$50 Donated by Eve By Nature

Class 1282 Leatherwork Item

Class 1283 Any other handcrafted item not already mentioned.

Class 1284 For age 70 and over any article of creative arts.

Class 1285 Joint Venture (made by more than one person) - any article of creative art.

Class 1286 Lego/Brick/ Sculpture - any topic, artists own original design or creation

Artist's own original design or creation, Not to be built from a boxed design set using instructions. Exhibit must be on a tray or firm base for ease of movement.

Maximum size is 28cm x 28cm x 28cm. Any brand of plastic brick may be used.

This section is open to those 18yrs old and over.

Class 1287 ART ABILITY (Working with people with disabilities, Individual Art Ability)

Any subject Painting or Drawing - Any medium

First Prize \$25 Donated by BRENDAN TYANAN

Class 1288 INDIGENOUS AUSTRALIAN ART - Any Subject, any medium or mixed media

(Restricted to Indigenous Australian Entrants) First Prize \$25 Donated by MARILYN TYANAN



WIRED RITE
— ELECTRICAL —
SOLAR & AIR CONDITIONING

We are proud to offer a wide range of electrical, solar and Air Conditioning solutions. Whether you need an electrical repair, building a new home, fitting out a shop or you want to upgrade to a ducted air conditioning system, we can help! We can make your home or work place more energy efficient with LED lighting or with our Solar Systems, which are of the highest quality and reliability!

We are determined to provide you quality and timely Electrical, Solar and Air Conditioning services. Our prices are very competitive without sacrificing quality; and our workmanship is second to none.

Ph: 0414 958 525 wiredrite.com.au

MY COUNTRY ESCAPE CREATIVE ARTS

SECTION 10 - JUVENILE CREATIVE ARTS

STEWARD: Lynne Sutherland

ENTRY FEE: \$1. Prize money: 1st \$5, 2nd \$2 (unless otherwise specified)

Juvenile classes for persons under 18 years.

CHAMPION EXHIBIT - Ribbon & Prize - \$25 Donated by Catherine's Beauty Room

MOST SUCCESSFUL EXHIBITOR - Ribbon & Prize \$25 - Donated by The 4275 Collective

ENCOURAGEMENT AWARD - Ribbon & Prize - Donated by Canungra Post Office

JUDGES CHOICE - Ribbon & Gift - Donated by P & L Sutherland

Class 1321 Scrapbooking Layout

Class 1322 Scrapbooking/Papercraft off the page - any medium

Class 1323 Sculpture - any medium

Class 1324 Woodwork - Any article

Class 1325 Pyrography (Wood Burning)

Class 1326 Decorated Mask/Shoes/Jewellery Box/Plaque

Class 1327 Lego/Brick Diorama (12 - 17 years)

First Prize \$10 Donated by ROOM 27 HAIR STUDIO

LEGO RULES Lego/Brick Diorama (12-17 years)

Theme: Artists own original design or creation, no box sets using instructions. Exhibit MUST be on a tray or firm base for ease of movement. Maximum size is 40cm x 40cm x 40cm. Any brand of plastic construction brick may be used. Only one Diorama per person.

Class 1328 Lego/Brick Model/Sculpture (12-17 years)

First Prize \$10 Donated by ROOM 27 HAIR STUDIO

LEGO RULES Lego/Brick Model/Sculpture (12-17 years)

Any topic, artists own original design or creation, no boxed sets using instructions. Exhibit

MUST be on a tray or firm base for ease of movement. Maximum size is 28cm x 28 cm x 28cm. Any brand of plastic construction brick may be used.

Class 1329 Art Ability (Working with people with disabilities, Individual Art Ability) Any subject - Any medium

First Prize \$10 Donated by ROOM 27 HAIR STUDIO

Class 1330 Indigenous Australian Art - (Restricted to Indigenous Australian Entrants) Any Subject, any medium or mixed media



STOCKMANS SUPPLIES



Stockman's Supplies are a proud family business, supplying farrier tools and equipment Australia wide since 1973.

Enjoy the Canungra Rodeo and you can visit us in store, or check out our extensive catalogue online.

www.stockmanssupplies.com

Brisbane - Townsville - Toowoomba - Tamworth