

# Bring the whole family!

# SHOW TIME

## Admission Prices

ADULTS \$15  
 KIDS / PENSIONERS \$10  
 FAMILY ( 2 ADULTS & 2 KIDS ) \$40  
 KIDS UNDER 11 - FREE



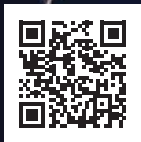
Saturday  
 26th August 2023  
 Gates Open 8am



MAJOR SPONSOR

**CANUNGRA HOTEL**

Cold beer, great food, good friends



More Details online!

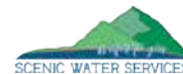
### SHOW SPONSORS



Cold beer, great food, good friends



Canungra



blanccreation.com

# INDEX

2023 Canungra Show Society Committee ..... Page 3  
2023 President's Message ..... Page 4  
2023 Canungra Show Sponsors List..... Page 5  
Canungra AH&I Society: By-Laws & Regulations ..... Page 6

## CANUNGRA SHOWGROUND COMPETITIONS

Pavilion ..... Pages 7 – 17  
Fine & Creative Arts Pavilion ..... Pages 18 – 23  
Fat Cattle – Hoof Classes ..... Pages 24 – 25  
Stud Beef Cattle ..... Pages 26 – 28  
Tractor Pull..... Page 29  
Horses..... Pages 30 - 39  
Showjumping..... Page 39  
Aquis Woodchop Program ..... Pages 40  
Dog Show..... Page 41  
Australian Miniature Goats..... Page 42-45  
Canungra Ute Muster .....Pages 46-47



# MACHINE HIRE

**MACHINES FOR DRY HIRE**

Husband and wife team offering dry hire machines to get your jobs done around the place

**COMPETITIVE PRICES AND  
FREE LOCAL DELIVERY**

- **We have Excavators, Skid Steer, Log Splitter, Trailers and Firefighting units**
- **Our excavators have Augers and Rock Grab Attachments**

**1 Wagonwheel Rd  
BOYLAND**

**GIVE US A CALL TODAY  
TO BOOK IN**

**0437 945 201 nrqmachinehire.com**

<b>PRESIDENT</b>	James Geiger
<b>VICE PRESIDENTS</b>	Steve Noy & Jo Day
<b>SECRETARY</b>	Sharon Rafferty
<b>TREASURER</b>	Candice Wright
<b>ASSISTANT TREASURER</b>	Jo Day
<b>PATRON/ES</b>	Doug Bradfield (Past President), Jennifer Corcoran (Past President) Joyce Libke (Society Historian)
<b>SPONSORSHIP</b>	Sharon Rafferty / Tiffany Sieuwerts / Zarah Murray
<b>TRADE COORDINATORS</b>	Nadine Fitzgerald
<b>ENTERTAINMENT COORDINATOR</b>	Sharon Rafferty, Jesseka Robertson & Connie Sutherland
<b>MARKETING SOCIALS</b>	Tiffany Sieuwerts / Zarah Murray
<b>GATE COORDINATOR</b>	Julia Schafer
<b>CAR PARKING</b>	Biddaddaba Rural Fire Brigade
<b>BAR COORDINATOR</b>	Jo Day

## CHIEF STEWARDS

<b>MAIN PAVILION</b>	Robyn Mahony
<b>FINE ARTS PAVILION</b>	Kate Kinsela
<b>HORSES</b>	Lynn Porter
<b>STUD BEEF CATTLE</b>	Steve Moriarty
<b>FAT CATTLE</b>	Dan Piacun, Chris Browning
<b>MINIATURE GOAT</b>	Tim Thomas
<b>WOODCHOP</b>	John and James Geiger
<b>UTE MUSTER</b>	Ree and Nick Lister
<b>GROUNDS COORDINATOR</b>	Garry Robertson & Clive Moran

## CONTACT DETAILS

Phone: 0403 278 566. Postal Address: PO Box 47, Canungra QLD 4275  
Canungra Showgrounds, Coburg Road, Canungra QLD 4275  
Web: [www.canungrashowsociety.org](http://www.canungrashowsociety.org) Email: [canungrashowsociety@gmail.com](mailto:canungrashowsociety@gmail.com)

COMPETITORS MUST PAY ADMISSION  
ONLY DOGS ALLOWED ON-SITE ARE SEEING EYE DOGS  
OR CERTIFIED EMOTIONAL SUPPORT DOGS  
LIMITED GOLD COIN DONATION PARKING FOR VEHICLES ON THE GROUND  
NO GLASS OR ALCOHOL ALLOWED ON THE GROUNDS

# PRESIDENT'S MESSAGE



The Management committee, members and volunteers of the Canungra Show Society warmly welcome you to the 85th Annual Canungra Show.

85 years, what a milestone!

This is my first year of being the Canungra Show Society president, but as a born and raised local, it will be my 29th year of coming to the show.

It is an eye opener seeing how much work and commitment that goes into the organisation of our annual show.

A massive thank you to our Show committee members, Sponsors and volunteers, they do an amazing job every year.

Each show we try to incorporate something for everyone, this year our emphasis is on the children in our community. We have free entry for primary school aged children.

Exploring the grounds, you will find an array of exhibits in the Pavilion, Cattle/Horses/Miniature goats classes, Facepainting, Balloon Art, Circus Performance and workshop, Urban Reptiles, pig races, carnival rides and a crowd favourite the Woodchop.

The nighttime program boasts plenty of fun with Ashtons entertainments Globe Act with fire display, the Wheel of Steel, Horse Trick riding and the spectacular fireworks display. For the parents we have the bar, live band and icy cold drinks.

**James Geiger**

CAHIS Inc President, 2023



## ENTERTAINMENT

- **Woodchop • Bushmans Challenge**
- **Ashtons Entertainment - Globe Act with fire display and the Wheel of Steel**
- **Amazing Animals 2 U • Fireworks 7:00pm**
  - **HLS Horse Trick riding**
  - **Circus Performance and workshop**
- **Urban Reptiles • Pig races • Carnival ride**

# THANK YOU TO OUR SPONSORS

A special thank you to our sponsors who assist the Canungra Show Society in presenting the 2023 Canungra Show. We ask visitors, competitors and the Canungra community to support these business's as their support enables the Canungra Show Society to bring these great annual events for the community to enjoy.

## MAJOR SPONSOR

Canungra Hotel

## PLATINUM SPONSORS

Aquis Australia  
Canungra Dental  
James Geiger Electrical  
My Country Escape  
North Australian Contracting

Now Buildings  
NRQ Machine Hire  
Queensland Government  
Ray White Canungra  
Ringers Western

Stockmans Supplies  
The Gun Shed  
Wired Rite Electrical

## GOLD SPONSORS

Anderson Consulting  
BENDIGO Canungra & District Community Bank  
Blanc Creations

Ringers Western  
Scenic Water Services  
Goodwood Paint Horse Stud

## SILVER SPONSORS

ACS Engineering  
Albert River Wines  
Bp Canungra  
Canungra Hardware  
Canungra Lawn mowing

Fairdream  
Finch Earthmoving  
Katherine O'Brien Photography  
O'Reilly's Rainforest Retreat  
T J Kelly Surveyors

That Platter Company  
The Out Post  
The Shoe Vault

## BRONZE SPONSORS

Peter, John & Stephen Geiger

## COPPER SPONSORS

Airlie Worrall  
Ann Roberts  
Beadesert & District Orchid & Foliage Society  
Boyd O'Brien Bartholomew  
Canungra Art & Craft Group  
Canungra Books and Art  
Canungra Calendar  
Carolyn Mahony  
Catherine's Beauty Room  
Connie Sutherland  
Cuppa Hut

D and J Libke  
D and V Finch  
Doug and Jenny Bradfield  
Eve by Nature Day Spa and Retreat  
Finch Family  
G R McCabe Painters  
Hazlewood Lodge  
Katahli Arts  
M J & J L Corcoran  
Mahony Family  
Margaret Day  
Marilyn Tynan

Nijole Pengelley - Art Always  
P & L Sutherland  
R G & V Duncan  
Riverbend Country Bush Camping  
Room 27 Hair Studio  
The 4275 Collective  
The Blue House  
Trish Corcoran  
Watterson family  
Wonglepong QCWA

**ONLINE ENTRIES ACCEPTED AT**  
**[www.canungrashowsociety.org](http://www.canungrashowsociety.org)**



# BY-LAWS & REGULATIONS

- The Stewards in each section will settle any disputes arising therein, but the Exhibitor has the privilege of lodging a written protest against any decision thus given which will be dealt with by the committee whose ruling is final.
- Should any exhibitor desire to impact any further information regarding an exhibit to a judge, such information will be imparted per medium of the steward at his/her discretion. The infringement of the Regulation will disqualify the exhibit.
- Should any competitor, exhibitor or employee of such obstruct or abuse a steward or a judge in the execution of his duties he shall be liable to forfeiture of his prize money and shall be excluded from further competition at the show.
- The By-Laws and Regulations of the Queensland Chamber of Agricultural Societies comprised in the model schedule, except where such may be modified or added to by special By-Laws and Regulations comprises herein, shall be the conditions of competition and all exhibitors and competitors shall make their entries or enter into competition on this express condition.
- No entry fees will be refunded unless directed by the stewards. No horse will be allowed to compete unless nomination fees are paid.
- The committee reserves the right to have any item which, in their opinion is considered dangerous or objectionable and which is exhibited or offered to Patrons as an item for sale or a prize given or distributed in any manner, any further reserves the right to immediately cancel space allocation for the current Show period, and/or any further Show held on these grounds.
- No refund of gate money.
- Pavilion will be open  
Thursday 24th August  
General Exhibits 12pm - 7pm NON perishable exhibits  
Fine/Creative Arts 4pm - 7pm  
Friday 25th August  
General Exhibits 8 am to 12 pm  
Fine/Creative Arts 1pm - 4pm
- Pavilion entries are to be collected between 9.30am and 11:00am on the Sunday immediately following the Canungra Show.

## ENTRIES

- Entries taken on the day except the Pavilion, Fine Arts Pavilion, Miniature Goats, Stud Cattle, Fat Cattle and Wood-chop. Online entries can be made via the Society's web site [www.canungrashowsociety.org](http://www.canungrashowsociety.org). Please refer to appropriate section in the schedule.

## WORKPLACE HEALTH AND SAFETY

- **PUBLIC LIABILITY INSURANCE:** All exhibitors, space holders and entertainers are responsible for their own public liability insurance. While the Show Society and its members take every care to ensure the safety to patrons, they will not be held liable for any damage caused by the negligence or property of exhibitors, space holders or entertainers.
- **ELECTRICAL EQUIPMENT:** Any exhibitors/space holders intending to bring electrical equipment and/or gas bottles to the Showgrounds will be required to ensure that such equipment is fitted with earth circuit breakers and that all electrical leads, tools and appliances have been inspected and tagged by a licensed electrical contractor or gas fitter. This is essential for the safety of all exhibitors and the general public and is a requirement of the Workplace Health and Safety Act of 1989. The Act imposes very severe penalties in the event of non-compliance with its provisions. Any exhibitors or space holders who do not comply will not be allowed on the Canungra Showgrounds. Exhibitors should check all electrical equipment and /or gas bottles to avoid the occurrence of any difficulties.
- **LEADERS OF CATTLE:** Exhibitors allowing minors to lead cattle in the Grand Parade do so at their own risk and accept full responsibility for any incident which may occur. The Canungra Show Society or any of its members will not be held liable for any damage or injury which may occur through any such incident.
- **PLANTS:** ALL PLANTS NEED TO BE PEST AND DISEASE FREE OR THEY WILL NOT BE EXHIBITED. No double potting, no pots above 30cm In height and easily lifted by 1 person.



# CANUNGRA & DISTRICT COMMUNITY BANK PAVILION

**CHIEF PAVILION STEWARDS:** Mrs Robyn Mahony, Ph: 07 5543 5528 Rod Duncan Ph: 07 55435 240

**ENTRY FEE:** \$1 per class. 1st Prize \$5, 2nd Prize \$2 unless otherwise stated.

## PAVILION PROCEDURES

1. Pavilion will be open  
Thursday 24th August  
General Exhibits 12pm - 7pm NON perishable exhibits  
Fine/Creative Arts 4pm - 7pm  
Friday 25th August  
General Exhibits 8 am to 12 pm  
Fine/Creative Arts 1pm - 4pm
2. Completed entry forms and fees must accompany exhibits or entries will be refused.
3. Receipts will be given for entries, then must be produced when claiming your exhibits.
4. Exhibits must not have been entered in a previous Canungra show.
5. All exhibits must be the bonafide work of the Exhibitor, grown or made by the Exhibitor unless otherwise stated.
6. Entry fee and prize money are stated at the beginning of each section. Where there is a gift or trophy no prize money will be given. A gift will not be transferable for money.
7. The Judge's decision is final.
8. The Judge need not award any prize to an exhibit, which in their opinion does not comply with the conditions. The Judge shall award a second prize if the exhibit is not considered worthy of a First, and shall not award any prize if the exhibit is not to sufficient merit.
9. Should any exhibitor desire to impart any further information regarding an exhibit to the Judge, such information will be imparted per medium of the steward.
10. The committee reserves the right to refuse any item which in their opinion is considered dangerous or objectionable.
11. The Society will NOT be held responsible for any loss or damage to any exhibit, however, all possible care will be taken.
12. Exhibits for sale must be marked 'for sale' on the back of the work. A commission of 20% will go to the society for all work sold.
13. Signatures of artwork will be covered
14. It is possible not all artwork will be displayed.

## COLLECTION OF ENTRIES

15. The pavilion will be open for public viewing on Saturday from 9.00am until 7.00pm.

16. All exhibits must remain on show until the close of the show. No entries will be given out on Saturday.
17. No responsibility will be taken for entries not collected before 11:00am on Sunday.
18. The Collection of entries will be between 9:00am to 11:00am on SUNDAY IMMEDIATELY FOLLOWING THE CANUNGRA SHOW
19. Prizes not collected on the Sunday morning after the show will be held for 1 (one) month, after this they will be forfeited back to the show society.
20. Alternate arrangements may be made by contacting the Chief Steward.

CHAMPION EXHIBITOR OF THE PAVILION (ALL SECTIONS) will receive a Society Sash, Prize and Perpetual Trophy. Prize donated by O'Reilly's Rainforest Guesthouse

This Perpetual Trophy must be returned to the Show Society prior to this year's Show

- CHAMPION EXHIBIT IN EACH SECTION - Society sash & \$20.
- MOST SUCCESSFUL EXHIBITOR IN EACH SECTION - Society sash & \$20. Class winners receive prize (stated at the beginning of each section) and certificate.



Specialising in Hunting, Outdoors and Bird and Wildlife Mitigation Products.  
[www.thegunshedqld.com.au](http://www.thegunshedqld.com.au)

# CANUNGRA & DISTRICT COMMUNITY BANK PAVILION

(Please circle) Adult / Juvenile

Name ..... Phone No .....

Address .....

*ENTRY FEES MUST ACCOMPANY ENTRIES (ALL ENTRIES SUBJECT TO SOCIETY BY-LAWS AND REGULATIONS)*

Section	Class	Exhibit	Entry Fee

**PROUDLY SUPPORTING THE  
CANUNGRA COMMUNITY**



# CANUNGRA & DISTRICT COMMUNITY BANK PAVILION

## Pavilion Adult

**CHIEF PAVILION STEWARDS:** Mrs Robyn Mahony, Ph: 07 5543 5528 Rod Duncan

Ph: 07 55435 240

**ENTRY FEE:** \$1 per class. 1st Prize \$5, 2nd Prize \$2 unless otherwise stated.

- Pavilion will be open  
Thursday 24th August  
General Exhibits 12pm - 7pm NON perishable exhibits  
Fine/Creative Arts 4pm - 7pm  
Friday 25th August  
General Exhibits 8 am to 12 pm  
Fine/Creative Arts 1pm - 4pm

### PAVILION PROCEDURES

- Completed entry forms and fees must accompany exhibits or entries will be refused.
- Receipts will be given for entries, then must be produced when claiming your exhibits.
- Exhibits must not have been entered in a previous Canungra show.
- All exhibits must be the bonafide work of the Exhibitor, grown or made by the Exhibitor unless otherwise stated.
- Entry fees and prize money are stated at the beginning of each section. Where there is a gift or trophy no prize money will be given. A gift will not be transferable for money.
- The Judge's decision is final.
- The Judge need not award any prize to an exhibit, which in their opinion does not comply with the conditions. The Judge shall award a Second Prize if the exhibit is not considered worthy of a First, and shall not award any prize if the exhibit is not of sufficient merit.
- Should any exhibitor desire to impart any further information regarding an exhibit to the Judge, such

information will be imparted per the medium of the steward.

- The committee reserves the right to refuse any item which in their opinion is considered dangerous or objectionable.
- The Society will NOT be held responsible for any loss or damage to any exhibit, however, all possible care will be taken.
- Exhibits for sale must be marked "FOR SALE" on the back of the work. A commission of 20% will go to the society for all work sold.
- Signatures of artwork will be covered.
- It is possible not all artwork will be displayed.

### COLLECTION OF ENTRIES

- The pavilion will be open for public viewing on Saturday from 9.00 am until 7.00 pm.
- All exhibits must remain on show until the close of the show. No entries will be given back on Saturday.
- No responsibility will be taken for entries not collected before 11:00 am on Sunday.
- The collection of entries will be between 9:00 am -11:00 am on SUNDAY IMMEDIATELY FOLLOWING THE CANUNGRA SHOW (Please show receipt).
- Prizes not collected on the Sunday morning after the show will be held for 1 (one) month, after this they will be forfeited back to the show society.
- Alternate arrangements may be made by contacting the Chief Steward.

CHAMPION EXHIBITOR OF THE PAVILION (ALL SECTIONS) will receive a Sash, Prize and Perpetual Trophy. Prize donated by O'Reilly's Rainforest Guesthouse.

This Perpetual Trophy must be returned to the Show Society prior to this year's Show

- CHAMPION EXHIBIT IN EACH SECTION - Sash & \$20.
- MOST SUCCESSFUL EXHIBITOR IN EACH SECTION - Sash & \$20. Class winners receive prize (stated at the beginning of each section) and certificate.



[www.scenicwaterservices.com.au](http://www.scenicwaterservices.com.au)

**Domestic and commercial -**

**10,000 to 13,000lt**

Certified water cartage • Fully insured



**Friendly service - call Shane - 0409 844 321**

# CANUNGRA & DISTRICT COMMUNITY BANK PAVILION

## Section 1 - Vegetables & Fruit

**Steward** - Kelly Pickering

- All produce must be the production of the exhibitor.
- Where plates are mentioned, please use disposable plates - 6" (15cm).
- Classes are judged on quality and display techniques.
- Root vegetables must have tops attached.
- Please read entry conditions carefully and refer to the Pavilion Procedures at the beginning of the Pavilion Section.
- CHAMPION EXHIBIT - Prize & Sash. Prize sponsored by Ampol Canungra
- MOST SUCCESSFUL EXHIBITOR- Prize & Sash. Sponsored by My Country Escape

### Vegetables

Sponsored by OWL Wholefoods

- Class 500 Beans - 1 plate (12)
- Class 501 Beetroot - 1 plate (3)
- Class 502 Broccoli - 1 plate
- Class 503 Cabbage - 1 (any variety)
- Class 504 Carrots - 3 (Any Variety or Colour)
- Class 505 Cauliflower - 1 (any variety)
- Class 506 Celery - 1 bunch
- Class 507 Eschallots - 1 bundle
- Class 508 Lettuce - 1 (any variety)
- Class 509 Onions - 3 (any variety)
- Class 510 Peas - 1 plate (12)
- Class 511 Potatoes - 3 (any variety)
- Class 512 Pumpkin - 1 (any variety)
- Class 513 Radish - 6
- Class 514 Rhubarb - 6 stalks
- Class 515 Silverbeet - 6 stalks
- Class 516 Spring Onions - 1 bundle
- Class 517 Sweet Potato - (any variety)
- Class 518 Turnips - 3
- Class 519 Collection of Vegetables  
- 1st prize \$10 (not less than 6 varieties)
- Class 520 Any other variety not specified

### Fruit

- Class 521 Avocados - 3 (any variety )
- Class 522 Bananas - 1 Hand (any variety)
- Class 523 Cape Gooseberries - 1 plate
- Class 524 Grapefruit - 3
- Class 525 Lemonade - 3
- Class 526 Lemons - 3 Bush

- Class 527 Lemons - 3 Smooth Skin
- Class 528 Limes - 3 (any variety)
- Class 529 Mandarins - 3 (any variety)
- Class 530 Macadamia - 1 plate
- Class 531 Oranges - 3 Valencia
- Class 532 Oranges - 3 (any other variety)
- Class 533 Pecan Nut - 1 plate
- Class 534 Passionfruit - 3 (any variety)
- Class 535 Strawberries - 12
- Class 536 Tomatoes -1 Plate (3)
- Class 537 Tomatoes (Cherry) - Plate of 6 (Any Variety)
- Class 538 Collection of Fruit  
- 1st prize \$10 (not less than 3 varieties)
- Class 539 Collection of 6 Herbs (cut and identified)
- Class 540 Any other variety not specified
- CHAMPION EXHIBIT Vegetables & Fruit  
- Prize & Sash. Prize sponsored by Ampol Canungra

## Section 2 - Horticulture

**Stewards** - Mr Rod Duncan and Wendy Coleman

- All flowers must be grown by exhibitor unless otherwise stated .
- Bottles provided for exhibits for classes.
- Bowl: Round and wider than it is high .
- Vase: Taller than it is wide .
- Collection: Not less than 6 no more than 12.
  - Bunch: 12 to 20 Flowers
- For further information please see Stewards.

### Cut Flowers

- CHAMPION CUT BLOOM - Prize Donated by CANUNGRA HAIRDRESSING.
- MOST SUCCESSFUL EXHIBITOR OF HORTICULTURE SECTION - Prize Donated by The Mahony family in memory of Con Mahony
- Class 541 Arum Lilies - 1 cut
- Class 542 Anemone - 3 stems, distinct colours
- Class 543 Azalea - 1 cut
- Class 544 Bougainvillea - 1 cut
- Class 545 Bract 1 cut e.g. Statice
- Class 546 Iris 1 cut
- Class 547 Jonquil 1 cut
- Class 548 Tulip 1 cut
- Class 549 Tulip - 3 Stems Distinct Colours
- Class 550 Bulbous, Tuberos or Rhizomatous Flower
- Class 551 Calendulas - 3 Blooms, distinct colours
- Class 552 Carnation - 1 Bloom

# CANUNGRA & DISTRICT COMMUNITY BANK PAVILION

Class 553 Camellia - 1 Bloom  
Class 554 Daffodil - 1 Bloom  
Class 555 Daisies - Collection 1 variety  
Class 556 Daisies - Collection  
Class 557 Flowering Shrub - 1 cut  
Class 558 Flowering Creeper - 1 Cut  
Class 559 Flowering Tree (other than native) - 1 Cut  
Class 560 Geraniums - Ivy leaf - 3 stems - distinct colours (with leaves)  
Class 561 Pelargoniums/Geraniums - Collection  
Class 562 Gerbera - Single - 3 stems distinct colours  
1st Prize \$10 sponsored by The Blue House  
Class 563 Gerbera - Double - 3 stems distinct colours  
Class 564 Lavender - 1 Bunch - 10-20 stems  
Class 565 Lavender Collection - Mix of colours  
Class 566 Nasturtium - Collection  
Class 567 Native Shrub or Tree - 1 Cut  
Class 568 Native Shrub - Collection - 3 Types of Native Shrub  
Class 569 Orchid - King 1 Cut  
Class 570 Orchid - Crucifix 1 Cut  
Class 571 Orchid - Cymbidium - 1 cut  
Class 572 Pansy - 1 bloom  
Class 573 Pansy - 3 stems distinct colours  
Class 574 Petunias - Single collection  
Class 575 Petunias - Double collection  
Class 576 Phlox - Collection  
Class 577 Ranunculi 1 Bloom  
Class 578 Ranunculi - 3 stems distinct colours  
Class 579 Rose - 1 bloom  
Class 580 Rose - 3 stems distinct colours  
Class 581 Rose - 1 variety in three stages  
(Does not have to be off same stem.)  
Class 582 Rose - Miniature - 1 bloom  
Class 583 Rose - Miniature - 3 stems distinct colours  
Class 584 Rose - Miniature - 1 variety in three stages  
(Does not have to be off same stem.)  
Class 585 Snap Dragon - 1 cut  
Class 586 Snap Dragon - 3 stems distinct colours  
Class 587 Stock - 1 cut  
Class 588 Stock - 3 cuts distinct colours  
Class 589 Strelitzia - 1 Cut  
Class 590 Sweet Peas - 3 stems distinct colours  
Class 591 Violets - Bunch  
Class 592 Any other Flower not already described- 1 cut

(Flower must not have a class with 3 stems in distinct colours)

Champion Cut Bloom

- Prize Donated by CANUNGRA HAIRDRESSING.

Class 593 Poppy single bloom

Class 594 Poppy - 3 stems MUST BE DIFFERENT COLOURS

## Floral Art

Sponsored by Lydia's Garden

- Flowers in the following classes not necessarily grown by exhibitor.
- CHAMPION FLORAL ART EXHIBIT - Prize Donated by D & V Finch.

Class 595 Bowl of cut flowers - arranged for effect

Class 596 Dried Arrangement - natural material

Class 597 Arrangement of Foliage Material - No flowers (If any flowers are present in the arrangement, entry will be disqualified.)

Best Foliage \$25 prize

Class 598 Modern arrangement

(A contemporary design expressing current trends and ideas)

Class 599 Black & White arrangement - Flowers & Accessories

Class 600 Floral arrangement in novelty container (Container may only have 1 (one) opening for flowers.)

Class 601 One colour Arrangement  
One colour in different shades/tones.

Class 602 Arrangement using natives

Class 603 Arrangement using only roses

Class 604 Arrangement depicting Spring

CHAMPION EXHIBIT - Floral Art

Prize Donated by D & V Finch.

Class 605 Arrangement depicting a Song - labelled

Class 606 Decorative Basket - viewed from all sides

Class 607 Miniature arrangement

(not to exceed 7cm high by 11cm wide)

Class 608 Shoulder Spray - displayed on saucer)

Entries not displayed on a saucer will be disqualified)

Class 609 Arrangement of Cottage Garden Flowers

## Foliage and Receptacle Plants

Sponsored by Lydia's Garden

Prizemoney: 1st \$5, 2nd \$3, 3rd \$2.

Best Foilage \$25

Class 610 Fern or Fern Ally

# CANUNGRA & DISTRICT COMMUNITY BANK PAVILION

Class 611 Palm

Class 612 Anthurium/Philodendron

Class 613 Begonia

Class 614 Succulent/Cacti

Class 615 Collection of Succulents/Cacti in a bowl for effect.

(No less than 6 different succulents/cacti.

Rocks and pebbles can be used for filling effect.

Small decorative items allowed, excessive or oversized will result in disqualification.)

Class 616 Bromeliad

Class 617 Any other foliage plant

Class 618 Plant in bloom

Class 619 Pot of Flowering Plants

Class 620 Bonsai

Class 621 Hanging basket

## Orchids

Sponsored by Beaudesert & District Orchid and Foliage Society.

Prizemoney: 1st \$5, 2nd \$3, 3rd \$2.

Class 622 Native orchid

Class 623 Cymbidium

Class 624 Cattleya

Class 625 Any other Orchid not provided for

Class 626 Hanging basket of orchids in bloom

## Other Plants

Class 627 Azalea in bloom

## Section 3 - Cookery & Home Produce

**STEWARDS** - Mrs V Finch and Mrs K Moriarty

Exhibits to be exhibited on a disposable plate provided by the exhibitor.

**NOTE TO EXHIBITORS** – entries are to be presented as instructed. Do not add personal touches such as decorations unless instructed (eg iced top means only the top is iced, not sides and no decorations). Deviation from instructions will result in disqualification.

**MOST SUCCESSFUL EXHIBITOR** - Cookery - Prize and Sash - Sponsored by Marilyn Tynan

Judges Choice Award - Rosette sponsored by Linda Ashton



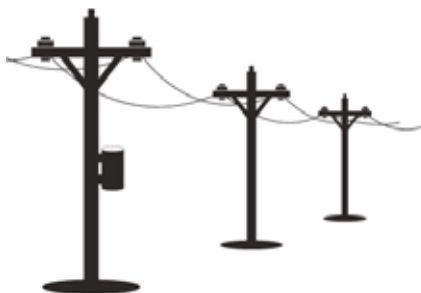
# GEIGER

JAMES GEIGER ELECTRICAL PTY LTD

Your local electrician for all aspects of electrical needs

**Property Poles  
Undergrounds**

**Residential  
Commercial  
Agricultural**



## 0402 192 897



# CANUNGRA & DISTRICT COMMUNITY BANK PAVILION

## Baking

Class 628 Dark Rich Fruit Cake

1st \$70; 2nd \$20; 3rd \$10. Sponsored by Canungra Craft Group

Class 629 Boiled Fruit Cake

1st Prize \$25 - Donated by Melville family.

Class 630 Patty Cakes

(6 iced, no decorations, not muffin size).

Class 631 Six Plain Scones

Sponsored by The Cuppa Hut

Class 632 Six Pumpkin Scones

Class 633 Six Pikelets

Class 634 Chocolate Bar Cake (Chocolate iced top)

1st prize \$25. Sponsored by Carol Mahony.

NOT PACKET MIX

Class 635 Orange Bar Cake (Iced on top only decorated with orange peel)

Sponsored by The Cuppa Hut

Class 636 Banana Bar Cake with Lemon Icing on top.

Lemon cream cheese icing.

No decoration.

Class 637 Carrot Cake (Round tin - no fruit, iced top)

Vanilla cream cheese icing.

No decoration.

Walnuts allowed.

Class 638 Tea Cake (Plain, Cinnamon Sugar Top)

First Prize \$20 donated by My Country Escape

Class 639 Decorated Birthday Cake (any theme)

1st \$20, 2nd \$10, 3rd \$5. Gift voucher donated by My Country Escape

Class 640 Shortbread (Plate marked in eight portions)

Shortbread fingers will be disqualified

Class 641 Muffins - Savoury (6 - not packet mix)

Class 642 Muffins - Sweet (6 - not packet mix)

Class 643 Slice (any variety)

Slice Variety Must be labeled.

Class 644 Anzac Biscuits (6)

Class 645 Selection of Biscuits - 6 Biscuits (3 varieties 2 of each)

3 Varieties ie, Cornflake, Melting Moments, Jam Drops, Gingersnaps

Class 646 Date bar

SPONSORED by Cuppa Hut

Class 647 Round Chocolate Cake Iced

First Prize gift voucher \$10 Sponsored by My Country Escape

Chocolate icing any variety. NOT PACKET MIX

Round Chocolate Cake Iced - \$50

Class 648 Plain Scones (Plate of 6)

First Prize gift voucher \$10 Sponsored by My Country Escape

Plain scones - \$50

Class 649 Vegan Chocolate Cake

Must Be Iced on top

## Sweets

• Judged on quality and display.

Class 650 French Jellies - 6 (dusted with castor sugar)

Class 651 Coconut Ice - 6

Class 652 Marshmallows - 3 Plain, 3 Toasted

Class 653 Rocky Road - 6

Class 654 Fudge - Chocolate - 6

Can be soft or hard in nature.

Class 655 Fudge - Caramel - 6

Can be soft or hard in nature.

Class 656 Rum Balls - 6

Class 657 Apricot Balls - 6

Class 658 Home Made Chocolate (plain) - 6

Class 659 White Christmas - 6

Class 660 Butterscotch - 6

Class 661 Peanut Brittle - 6

MOST SUCCESSFUL EXHIBITOR COOKERY - \$20

Classes 626 to 647 - \$20 and Sash -

Class 662 Any other Sweet not already accounted for

Class 663 Box of Mixed Sweets Selection for display 12 Pieces (Presented in a box. 4 different sweets.)

CHAMPION EXHIBIT - Cookery - \$20

## Home Produce

Sponsored by My Country Escape

• JAMS AND PRESERVES - NOTE: Jars must not be less than 250 grams and not more than 500 grams.

Please label jars clearly Pickles, Chutneys and Sauces must have PLASTIC LIDS. No wax on top of jars. No covered tops.

• MOST SUCCESSFUL EXHIBITOR Classes 1167 to 1182 - Gift voucher and Sash donated by My Country Escape

Class 664 Marmalade - any variety

Class 665 Strawberry Jam

1st Prize \$15. Donated by Cafe Metz

Class 666 Jar of any other Jam

Please label variety.

Class 667 Jar of any other Jelly

# CANUNGRA & DISTRICT COMMUNITY BANK PAVILION

Please label variety.

Class 668 Lemon Cheese or Butter

Class 669 Jar of any other Cheese or Butter

Please label variety.

Class 670 Jar of any other Relish or Chutney

Please label variety.

Class 671 Jar of Tomato Chutney/Relish

Class 672 Sweet Mustard Pickles

1st Prize \$15.

Class 673 Pickled Onion ( no garnishing)

Class 674 Pickled Vegetables (no garnishing)

Class 675 Bottle of fruit preserves

Class 676 Bottle of any variety sauce

Class 677 Honey - Jar

Class 678 Hen eggs - One dozen (judged on consistent size and colour)

Class 679 Eggs - One dozen - Any other variety (please name variety)

## Home Brew

- Judged on quality
- Home Brews to be presented in either a Tally size (no more than 750ml) or 4 x Stubbies (375ml)

Class 680 Novice Beer

Entrant MUST not have previously won at a show for any brew they have made.

Class 681 Beer - Ale

Class 682 Beer - Lager

Class 683 Beer - Stout

Class 684 Ginger Beer

Class 685 Cider

Class 686 White Wine

Class 687 Red Wine

Class 688 Liqueur

Class 689 Spirits - Any Variety

Class 690 Any Brew - Not Catered for

## Section 4 - Needlework

**STEWARD** - Ms. M Lynch and Mrs Carmelle Gricks

- All classes are open to all exhibitors.
- All work must be the work of the exhibitor, not more than 12 months old or previously worn.
- Any exhibit washed will be disqualified . Please do not mount work.
- Novice machine embroidery must have never entered a machine embroidery class previously.
- CHAMPION EXHIBIT - Prize Gift Voucher and Sash Sponsored by My Country Escape

- MOST SUCCESSFUL EXHIBITOR - Prize Gift Voucher and Sash Sponsored by My Country Escape

## Knitting and Crochet

Class 691 Infants knitted or crochet 3 piece wool outfit

Class 692 Set 3 pairs knitted or crochet booties

Class 693 Infants knitted jacket

Class 694 Knitted Adults Garment

Class 695 Knitted Childs Garment

Class 696 Crochet Wool Rug

Class 697 One Handkerchief with Crochet edge or corner

Class 698 Kitchen or Hand Towel with crochet edge

Class 699 Crochet table centre or runner

Class 700 Knitted or crochet shawl

Class 701 Doll in knitted or crochet outfit

Class 702 Soft toy knitted or crochet

## Embroidery

Class 703 Embroidered or Cross Stitch article (doily or runner only)

Class 704 Embroidered or Cross Stitch 3 piece duchess set

Class 705 Machine Embroidery

Class 706 Novice Machine Embroidery

Entrant must have not previously entered an embroidery class.

Entry to be NO larger than a standard Tea Towel.

Class 707 Any other embroidery not provided for.

Class 708 Article of Cross Stitch - framed

Class 709 Article of Long Stitch - framed

Class 710 Article of Tapestry - framed

Class 711 Article of Ribbon Embroidery

Class 712 Article of Smocking

## Sewing

Class 713 Clothing made using machine

Class 714 Article of Stretch Sewing

Class 715 Article made from Patchwork excluding quilting

Class 716 Article featuring Applique

1st Prize donated by Canungra Art and Culture Group.

Class 717 Quilt - made entirely by the exhibitor (patchwork, quilting etc)

The winner of this class is eligible to represent Canungra AH&I Society in the Quilts Across

Queensland Open Representative Class at the Royal Queensland Show.

# CANUNGRA & DISTRICT COMMUNITY BANK PAVILION

CHAMPION Quilt - \$20

Rosette and \$20. Sponsored by The Blue House

Class 718 Beginners Quilt

Entrant must not have entered previously in any quilting classes

Class 719 Beginners Quilted item - table runner, stocking, cushion cover

Entrant must not have entered in any quilting sections

Class 720 Article featuring Applique Detached

1st Prize \$10 Donated by Canungra Art & Cultural Group

## Miscellaneous

Class 721 Soft toy - cloth or felt

Class 722 Jointed Teddy Bear

First prize \$10 sponsored by Canungra Art and Craft Group

Class 723 Best dressed doll

Class 724 Christmas decoration

Class 725 Dress or coat hanger - covered

Class 726 Hand or Machine Hand Bag

Sponsored by The Shoe Vault (voucher/product)

Class 727 Any other article not provided for

Class 728 Diamond Art Painting

(Must Be Framed)

## For Persons Over Age 65 Years

Class 729 Any Knitted Article

Sponsored by The Blue House \$10

Class 730 Any Crochet Article

Class 731 Any Article of Machine Sewing

Class 732 Any other Article

Most Successful Exhibitor - prize donated by Beautiful Batches

## Section 5 - Amateur Photography

**Steward** - Emily Livingston

Sponsored by My Country Escape

- Each entry to be mounted on card board wider and longer than the photograph, eg. Photo 15 x 10 cm (6 x 4 inches) mounted on cardboard 18 x 13 cm (7 x 5 inches).
- Entries Must Not be framed. Maximum 5 entries per class per exhibitor.
- All entries to be the work of the exhibitor and not previously entered in the Canungra Show.
- Name, section & class to be clearly marked on back of entry.
- NO NAMES TO BE ON FRONT OF PHOTOGRAPHS
- The judges and stewards have the right to reject any entry where subject matter is considered unacceptable.
- Class 731 to 741 - Photos to be 15 x 10 cm (6 x 4 inches)
- Classes 736 & 737 - Photos to be mounted on same board

CHAMPION EXHIBITOR - Prize gift voucher & Sash donated by My Country Escape.

MOST SUCCESSFUL EXHIBITOR - Prize gift voucher & Sash donated by My Country Escape

ENTRY FEE: \$1.

1st Prize \$5, 2nd Prize \$2 unless otherwise stated.

## Amateur Photography

Class 733 Flora Study

Class 734 Animal/Fauna Study

Class 735 Farm Buildings or Equipment

Class 736 Child Study

Class 737 Portrait



*Proudly supporting the  
Canungra Show*

House Pads • Laser Levelling • Roads • Drains

• Supply & Build Bush Rock Walls •

Driveways • Clearing • Excavations • Dams • Soils • Gravels

Steven 0408 943 940 Email: [sacfinch05@gmail.com](mailto:sacfinch05@gmail.com)

# CANUNGRA & DISTRICT COMMUNITY BANK PAVILION

Class 738 Group of four photos - any topic, same theme  
1st Prize Gift voucher donated by My Country Escape

Class 739 Group of four photos - portrait or child study  
mounted on same board

Class 740 Scenic Rim Location

1st Prize Gift voucher donated by My Country Escape

Class 741 Black & White

Class 742 Sunset or Sunrise

Class 743 Weather Conditions

Enlargements (Any Size) Mounted

Class 744 Flora Study

Class 745 Animal/Fauna Study

Class 746 Land or Seascape

Class 747 Child Study

Class 748 Portrait

## Pavilion - Juvenile Section

**Stewards** – Mrs C Finch, Mrs J Mahony & Mrs B Honeycombe

- MOST SUCCESSFUL EXHIBITOR - awarded to the exhibitor with the most points in respective sections.
- Most Successful Exhibitor – Preschool to Year 3 Section - \$10 Sponsored by My Country Escape
- Most Successful Exhibitor – Year 4 to Year 7 Section - \$10 Sponsored by Catherine's Beauty Room
- Most Successful Exhibitor – Year 8 to Year 12 - \$20 Sponsored by My Country Escape
- Encouragement Award - Gloria Watterson Perpetual Trophy and Prize donated by the family of the late Gloria Watterson.

Judge's Choice Cookery Award - Rosette sponsored by Linda Ashton.

**ENTRY FEE** \$0.50 per entry. Prizemoney: 1st \$3, 2nd \$1.

- Juvenile Classes are sponsored by D & J Libke, Canungra Visitor Information Centre, Margaret Day, CWA (Wonglepong Branch).

NOTES TO EXHIBITORS – PLEASE READ FIRST

- PLEASE CIRCLE JUVENILE ON ENTRY FORM FOR SECTION 7 – all classes
- Entries will be received between 9am and 1pm on Friday before the Show
- Entries are to be collected on Sunday following the Show between 9am and 11:00am
- All articles not collected by 11:00am on the Sunday may be disposed of unless other arrangements have been made.
- Limit of 2 entries per class
- NO NEW ENTRY CLASSES WILL BE MADE - we only accept work in classes specified.

- NO NAMES are to be put on the FRONT of your work
- COOKERY & FRUIT - to be on disposable plates supplied by the exhibitor
- CAKES - iced tops only – no decorations except where specified
- EGGS - judged on consistent colour and display
- FRAGILE ARTICLES - to be presented on a hard surface (e.g. tray, plate, cardboard)
- ALL PHOTOS to be 15cm x 10cm (6 x 4 inches) or 19cm x 13cm (7 x 5 inches)

## Preschool to Year 3

### Cooking

Sponsored by My Country Escape

Class 1000 Edible necklace on thread made from sweets

Class 1001 Edible Necklace - Made from Fruit and Veggie on a string

Class 1002 Decorated plain biscuits - 3

Class 1003 Chocolate Crackles - 3

Class 1004 Decorated Boiled Egg

Class 1005 Eggs - 6

### Horticulture

Class 1006 Floral arrangement in a vase

### Craft

Class 1007 Article of hand sewing

Class 1008 Article of craft

Class 1009 Card any occasion - handmade

First prize \$10

Class 1010 Card any occasion - made using a computer

Class 1011 Lego/Duplo model

- no larger than 45 x 45cm to be presented on a firm base. Must be an original creation and

not a design made from instructions on a box.

Class 1012 Christmas Craft

Class 1013 College

### Photography

Class 1014 My Pet

Class 1015 Human face showing emotion - happiness or sadness

Class 1016 Selfie

First prize \$10

## Year 4 to Year 7

### Cooking

Class 1017 Chocolate Cake - Packet mix

– iced top only - no decoration, no soft icing or frosting, use pure icing sugar.



# CANUNGRA & DISTRICT COMMUNITY BANK PAVILION

Class 1018 Pikelets - 3.

Class 1019 Patty Cakes - 3

(iced top - decorated) 1st Prize \$5.

Class 1020 Hen eggs - 6 judged on colour consistency & display

Class 1021 Eggs any other variety - 6 judged on colour consistency & display.

## Horticulture

Class 1022 Floral Arrangement in a vase.

## Craft

Class 1023 Article of hand or machine sewing.

Class 1024 Article of craft.

Class 1025 Card (any occasion) - handmade.

Class 1026 Card (any occasion) - made using a computer.

Class 1027 Article made from a kit

Class 1028 Article made from recycled items

## Photography

Class 1029 My Pet

Class 1030 Human face showing emotion - happiness or sadness

Class 1031 Weather conditions

Class 1032 Selfie

Class 1033 Action or Sport

## Year 8 to 12

## Cooking

Judges Choice Juvenile Cookery Award - Rosette and \$10 - Sponsored by Linda Ashton

Class 1034 Chocolate Cake - NOT packet cake

(iced top only - no decoration, no soft icing or frosting, use pure icing sugar)

Class 1035 Wonder Cake (Recipe Below)

Sponsored by the Blue House \$5

### WONDER CAKE

1 cup sugar 125g butter

2 eggs

6 tablespoons milk

2 cups self-raising flour

1 teaspoon mixed spice

1 teaspoon cinnamon

1 x 375g packet mixed fruit

METHOD:- Place all ingredients in bowl and mix well for 4 minutes. Pour mixture into a greased, round tin and cook in a slow oven (140c) for up to an hour.

First place of \$10 sponsored by The Blue House

Class 1036 Pikelets - 6

Class 1037 Scones Plain - 3

1ST Prize \$5

Class 1038 Hen eggs - 6 judged on colour consistency & display

Class 1039 Eggs any other variety - 6 judged on colour consistency & display

Judge's Choice Juvenile Cookery Award

Rosette and \$10

## Horticulture

Class 1040 Floral arrangement in a vase

1st prize \$5 sponsored by The Blue House

## Craft

Class 1041 Article of hand or machine sewing

Class 1042 Card any occasion - handmade

First prize \$10

Class 1043 Card any occasion - made using a computer.

Class 1044 Any article of craft

## Photography

MOST SUCCESSFUL EXHIBITOR - Junior \$15 Sponsored by My Country Escape

MOST SUCCESSFUL EXHIBITOR - Junior Primary \$20 Sponsored by My Country Escape

MOST SUCCESSFUL EXHIBITOR - Upper Primary \$20 Sponsored by My Country Escape

MOST SUCCESSFUL EXHIBITOR - Secondary \$20 Sponsored by My Country Escape

Class 1045 Action or Sport

Class 1046 Portrait

Class 1047 Black and white print

Class 1048 Weather conditions

Class 1049 Sunset/Sunrise

Class 1050 Selfie

First prize \$20. Sponsored by My Country Escape

Encouragement Award - Gloria Watterson Perpetual Trophy

Gloria Watterson Perpetual Trophy and Prize donated by the family of the late Gloria Watterson.

Most Successful Exhibitor Junior Section - \$5

Most Successful Exhibitor Junior Primary Section - \$10

Most Successful Exhibitor Upper Primary Section - \$10

Most Successful Exhibitor Secondary Section - \$15

# MY COUNTRY ESCAPE FINE & CREATIVE ARTS

**CHIEF STEWARD:** Kate Kinsela Phone: 0432413039

Online Entries accepted at [canungrashowsociety.org](http://canungrashowsociety.org)

**ENTRIES CLOSE:** Friday, 25th August 2023 at 4:00 pm.  
NO LATE entries will be accepted

**DELIVERY OF ENTRIES:** All fine art and creative art entries are to be delivered by

Thursday 24th August

4.00pm - 7.00pm

Friday 25th August

1.00pm to 4.00pm

Judging will commence for fine & creative arts Friday at 6:00 pm.

Delivery Address: Canungra Show Grounds - 53 Coburg Rd, Canungra

**COLLECTION / PICK UP OF ENTRIES:** Sunday, 27th August 2023 9 am - 11 am

\*Please wait by the first entry (green door) and wait for one of the volunteers to assist you.

\*ONE ENTRY FORM PER PERSON - You may photocopy the entry form.

Entry Fee: Fine art and Creative Art Entries are \$3 per entry

**JUVENILE FINE ART AND CREATIVE ART ENTRIES ARE \$1 PER ENTRY**

**PLEASE CIRCLE**

Section 7 - Fine Arts

Section 8 - Juvenile Fine Arts

Section 9 - Creative Arts

Section 10 Juvenile Creative Arts

Name.....

Phone No .....

Address .....

Email.....

*ENTRY FEES MUST ACCOMPANY ENTRIES  
(ALL ENTRIES SUBJECT TO SOCIETY BY-LAWS AND REGULATIONS)*

Section	Class	Description of entry	Size	To Sell Price / NFS	Entry Fee	Sign In	Sign Out
(Example) 7	1250	(Local Novice) Owl painting	16x20 Inches	\$100 or Not for Sale	\$3		

**\*Limit: One item per class per exhibitor & there are size restrictions due to space constraints\***

Maximum size for entries is A3 and must be mounted on cardboard or canvas and ready to hang

# MY COUNTRY ESCAPE FINE ARTS

**CHIEF STEWARD:** Kate Kinsela Phone: 0432 413039

**Entry Fee:** Fine art and Creative Art Entries are \$3 per entry

Juvenile Fine art and Creative art entries are \$1 per entry

- Pavilion will be open  
Thursday 24th August  
General Exhibits 12pm - 7pm NON perishable exhibits  
Fine/Creative Arts 4pm - 7pm
- Friday 25th August  
General Exhibits 8 am to 12 pm  
Fine/Creative Arts 1pm - 4pm
- No entries will be accepted after 4 pm on Friday the 25th of August 2023
- Completed entry forms must accompany every entry or the entry will be refused
- Receipts will be given for all entries and these receipts must be presented on the collection of entries.
- Online entries can be dropped off during the above times, please bring your paperwork.
- The collection of entries will be between 9:00 am and 11:00 am on SUNDAY 27th August 2023. No responsibility will be taken for the works not collected unless a prior arrangement has been made by contacting Kate Kinsela on 0432 413 039
- Paid entries only will be accepted and displayed, with no private display items.
- These sections are open to amateurs and hobbyists only. Sections are not open to professional artists eg: Art Teachers
- Entries must be the bonafide work of the exhibitor.
- Entries must not have been entered into previous Canungra Shows.
- Entry fees and prize money are stated at the beginning of each section unless specified.
- Where there is a gift or trophy no prize money will be given. A gift will not be exchanged for money.
- The judge's decision is final.
- The judge need not award any prize to any exhibit which in their opinion does not comply with the conditions. The judge shall award a 2nd prize if the exhibit is not considered worthy of a first and shall not award any prize if the exhibit does not have sufficient merit.
- Should any exhibitor desire to impart any further information regarding an exhibit to the judge, such information will be imparted per the medium of the Chief Steward.
- The committee retains the right to refuse any items in whose opinion are considered objectionable.
- The Society will not hold itself responsible for any

loss or damage to any exhibit, however, all possible care will be taken.

- Entries available for sale must have the price recorded on the entry form. Please also mark the back of the artwork "FOR SALE".

A commission of 20% will go to the society on all items of work sold.

- All exhibit items will remain on show until the close of the show
- The room will be open for viewing on Saturday 26th August 2023 from 9 am - 7 pm
- Sections 7 & 8 Fine Art items MUST BE FRAMED & WIRED FOR HANGING FROM HOOKS
- It is possible not all artwork will be displayed.

\*Limit: One item per class per exhibitor & there are size restrictions due to space constraints\*

Maximum size for entries is A3 and must be mounted on cardboard or canvas and ready to hang.

MUST BE FRAMED AND WIRED FOR HANGING FROM HOOKS

## SECTION 7 - FINE ARTS

**STEWARD:** Kate Kinsela

**Entry Fee:** \$3. Prize Money: 1st \$10, 2nd \$5 (unless otherwise specified)

CHAMPION EXHIBIT - Sash & Prize - \$50 Donated by THE 4275 COLLECTIVE

MOST SUCCESSFUL EXHIBITOR - Sash & Prize \$20 Donated by ROOM 27 HAIR STUDIO

ENCOURAGEMENT AWARD - Sash & Prize - \$10 Gift Voucher - Donated by MY COUNTRY ESCAPE

Note: Any medium means, the use of any Pencil, Pen, Paint, Charcoal, Crayon, Recycled materials.

Class 1250 LOCAL NOVICE PAINTING - Any Subject - Any Medium

First Prize of \$50 Donated By Katahli Arts

(Open to artists who have been residents of the Scenic Rim Regional Council area

for at least 12 months prior to the date of the show and who have not won first prize at any previous Canungra Show).

Class 1251 PAINTING ANY HERITAGE SUBJECT - Any Medium.

First Prize \$10 Gift Voucher Donated by MY COUNTRY ESCAPE

Class 1252 DRAWING - Any Medium - Medium: Pencil, Pen, Crayon, Charcoal, Mixed Medium

First Prize \$25 Donated by ROOM 27 HAIR STUDIO

Class 1253 WATERCOLOUR PAINTING - Any Subject

First Prize \$50 Donated by BARRY BRODERICK

# MY COUNTRY ESCAPE FINE ARTS

Class 1254 PASTEL - Any Subject.

First Prize of \$25 Donated by CATHERINE'S BEAUTY ROOM

Class 1255 OIL PAINTING - Any Subject.

First Prize \$25 Donated by ROOM 27 HAIR STUDIO

Class 1256 LANDSCAPE - Any Medium.

First Prize \$10 Gift Voucher Donated by MY COUNTRY ESCAPE

Class 1257 SEASCAPE OR MARINE - Any Medium.

First Prize \$25 Donated by CONNIE SUTHERLAND

Class 1258 STILL LIFE - Any Medium.

First Prize \$25 Donated by ANNE ROBERTS - SARABAH

Class 1259 PORTRAIT OF A HUMAN FIGURE

First Prize \$25 Donated By KATAHLI ARTS

Class 1260 ANIMALS & BIRDS - Any Medium.

First Prize \$25 Donated by P& L SUTHERLAND

Class 1261 ZENTANGLE -any subject - any medium

First Prize \$25 Donated By KATAHLI ARTS

Class 1262 CONTEMPORARY - ABSTRACT - Any Medium

First Prize \$25 Donated by CANUNGRA BOOKS AND ART

Class 1263 PAINTING - any medium other than canvas

Class 1264 MONOTONE - Any Subject - Any Medium

First Prize \$10 Donated By KATAHLI ARTS

Class 1265 PAINTING OR DRAWING - Any Subject, any medium, by person over 70 years

First Prize is a \$50 GIFT VOUCHER Donated by MY COUNTRY ESCAPE

Class 1266 ART ABILITY (Working with people with disabilities, Individual Art Ability)

Any Subject painting or drawing - Any medium

First Prize \$25 Donated by BRENDAN TYANAN

Class 1267 INDIGENOUS AUSTRALIAN ART

Any Subject, any medium or mixed media (Restricted to Indigenous Australian Entrants)

First Prize \$25 Donated by MARILYN TYANAN

Class 1268 DIGITAL ART - Any Subject

First Prize \$25 Donated by THE BLUE HOUSE

Class 1269 GRAFFITI - Any Subject

First Prize \$10 Donated by ROOM 27 HAIR STUDIO

Class 1270 RECYCLED ART - Any Subject

First Prize \$10 Donated by ROOM 27 HAIR STUDIO and a \$5 Gift Voucher Donated by MY COUNTRY ESCAPE

Class 1271 POP ART - Any Subject

First Prize \$25 Donated by CANUNGRA BOOKS AND ART

Class 1272 MIXED MEDIA - Any Subject and medium

First Prize \$25 Donated by THE BLUE HOUSE

Class 1273 ANY SUBJECT / ANY MEDIUM - not already classified

First Prize Gift Voucher Donated by ROOM 27 HAIR STUDIO & Gift Voucher

Donated by MY COUNTRY ESCAPE



**Ray White**<sup>®</sup>  
CANUNGRA

PROUDLY LOCAL  
PROUDLY RAY WHITE CANUNGRA

SALES  
INVESTMENT  
PROPERTY MANAGEMENT

07 5543 4889 | RAYWHITECANUNGRA.COM.AU



# MY COUNTRY ESCAPE FINE ARTS

## SECTION 8 - JUVENILE FINE ARTS (UNDER 18 YEARS)

**STEWARD:** C Sutherland

**Entry Fee:** 50 cents for ages up to 11 years, and \$1 for ages 12 up to 17 years.

Prize Money: 1st \$3, 2nd \$1 (unless otherwise specified)

CHAMPION EXHIBIT - Sash & Prize - \$25 Donated by The 4275 Collective

MOST SUCCESSFUL EXHIBITOR - Sash & Prize - \$40 Donated by My Country Escape

ENCOURAGEMENT AWARD - Sash & Prize - \$30 Donated by My Country Escape

JUDGES CHOICE - Sash & Prize - \$15 Donated by P & L Sutherland

\*Limit: One item per class per exhibitor & there are size restrictions due to space constraints\*

Maximum size for entries is A3 and must be mounted on cardboard or canvas and ready to hang.

### Preschool to Year 3

Class 1300 DRAWING any medium

First Prize \$3, 2nd \$1 Donated by WONGLEPONG CWA

Class 1301 PAINTING any medium

First Prize \$3, 2nd \$1 Donated by WONGLEPONG CWA

Class 1302 MIXED MEDIUM or COLLAGE

First Prize \$3, 2nd \$1 Donated by WONGLEPONG CWA

Class 1303 ART ABILITY (Working with people with disabilities, Individual Art Ability) Any subject Painting or Drawing - Any medium

First Prize \$3, 2nd \$1

Class 1304 INDIGENOUS AUSTRALIAN ART - Any Subject, any medium or mixed media

(Restricted to Indigenous Australian Entrants)

First Prize \$3, 2nd \$1

### Year 4 to Year 7

Class 1305 DRAWING any medium

First Prize \$3, 2nd \$1 Donated by WONGLEPONG CWA

Class 1306 PAINTING any medium

First Prize \$3, 2nd \$1 Donated by WONGLEPONG CWA

Class 1307 MIXED MEDIUM or COLLAGE

First Prize \$3, 2nd \$1 Donated by WONGLEPONG CWA

Class 1308 ART ABILITY (Working with people with disabilities, Individual Art Ability)

Any subject Painting or Drawing - Any medium

First Prize \$3, 2nd \$1

Class 1309 INDIGENOUS AUSTRALIAN ART - Any Subject, any medium or mixed media

(Restricted to Indigenous Australian Entrants)

First Prize \$3, 2nd \$1

### Year 8 to Year 12

Class 1310 DRAWING - Pen, Ink, Pencil, Charcoal, Pastel any subject.

First Prize \$5, 2nd \$2 Donated by D.A & J.A LIBKE

Class 1311 PAINTING - any medium - any subject.

First Prize \$5, 2nd \$2 Donated by D.A & J.A LIBKE

Class 1312 Mixed Medium or Collage - any subject

First Prize \$5, 2nd \$2 Donated by D.A & J.A LIBKE

Class 1313 Zentangle - Any medium - any subject

First Prize \$5, 2nd \$2 Donated by D.A & J.A LIBKE

Class 1314 ART ABILITY (Working with people with disabilities, Individual Art Ability)

Any subject Painting or Drawing - Any medium

First Prize \$10 Donated by KATAHLI ARTS

Class 1315 INDIGENOUS AUSTRALIAN ART - Any Subject, any medium or mixed media

(Restricted to Indigenous Australian Entrants)

First Prize \$10, 2nd \$1 Donated by KATAHLI ARTS

Class 1316 DIGITAL ART - Any Subject

First Prize \$10 Donated by KATAHLI ARTS

Class 1317 GRAFFITI - Any Subject

First Prize \$10 ROOM 27 HAIR STUDIO

Class 1320 RECYCLED ART - Any Subject

First Prize \$10 ROOM 27 HAIR STUDIO

Class 1318 POP ART - Any Subject

First Prize \$10, 2nd \$1 Donated by KATAHLI ARTS

Class 1319 ANY SUBJECT / ANY MEDIUM - not already classified

First Prize \$5 Gift Voucher Donated by MY COUNTRY ESCAPE



**ACS Engineers**  
CIVIL | ENVIRONMENTAL | PROJECT MANAGEMENT

Providing Professional Engineering Services to the Scenic Rim

07 5541 3500  
www.acsengineers.com.au

Proud Sponsors of the Canungra Show & Rodeo

# MY COUNTRY ESCAPE CREATIVE ARTS

## SECTION 9 - CREATIVE ARTS

**STEWARD** Marilyn Tynan

**Entry Fee:** \$3. Prize Money: 1st \$10, 2nd \$5 (unless otherwise specified)

CHAMPION EXHIBIT - Sash & Prize - \$50 Donated by THE 4275 COLLECTIVE

MOST SUCCESSFUL EXHIBITOR - Sash & Prize - \$25 Donated by EVE BY NATURE

ENCOURAGEMENT AWARD - Sash & Prize - \$10 Donated by MY COUNTRY ESCAPE

Class 1274 Scrapbooking/Papercraft "off the page" any medium

Class 1275 Sculpture - any medium

1st Prize \$25. Donated by Ann Roberts

Class 1276 Beading-any article

Class 1277 Jewellery handmade

\$25 Donated by Eve By Nature

Class 1278 Pyrography (Wood Burning)

\$25 Donated by Connie Sutherland

Class 1279 Pottery/Ceramics

\$50 Donated by Eve By Nature

Class 1280 Handmade and Decorated Card

\$25 Donated by Eve By Nature

Class 1281 Silversmithing Item

\$50 Donated by Eve By Nature

Class 1282 Leatherwork Item

Class 1283 Any other handcrafted item not already mentioned.

Class 1284 For age 70 and over any article of creative arts.

Class 1285 Joint Venture (made by more than one person) - any article of creative art.

Class 1286 Lego/Brick/ Sculpture - any topic, artists own original design or creation

Artist's own original design or creation, Not to be built from a boxed design set using instructions. Exhibit must be on a tray or firm base for ease of movement.

Maximum size is 28cm x 28cm x 28cm. Any brand of plastic brick may be used.

This section is open to those 18yrs old and over.

Class 1287 ART ABILITY (Working with people with disabilities, Individual Art Ability)

Any subject Painting or Drawing - Any medium

First Prize \$25 Donated by BRENDAN TYANAN

Class 1288 INDIGENOUS AUSTRALIAN ART - Any Subject, any medium or mixed media

(Restricted to Indigenous Australian Entrants) First Prize \$25 Donated by MARILYN TYANAN



**WIRED RITE**  
— ELECTRICAL —  
**SOLAR & AIR CONDITIONING**

We are proud to offer a wide range of electrical, solar and Air Conditioning solutions. Whether you need an electrical repair, building a new home, fitting out a shop or you want to upgrade to a ducted air conditioning system, we can help! We can make your home or work place more energy efficient with LED lighting or with our Solar Systems, which are of the highest quality and reliability!

We are determined to provide you quality and timely Electrical, Solar and Air Conditioning services. Our prices are very competitive without sacrificing quality; and our workmanship is second to none.

**Ph: 0414 958 525 [wiredrite.com.au](http://wiredrite.com.au)**

# MY COUNTRY ESCAPE CREATIVE ARTS

## SECTION 10 - JUVENILE CREATIVE ARTS

**STEWARD:** Lynne Sutherland

**ENTRY FEE:** \$1. Prize money: 1st \$5, 2nd \$2 (unless otherwise specified)

Juvenile classes for persons under 18 years.

**CHAMPION EXHIBIT - Ribbon & Prize - \$25 Donated by Catherine's Beauty Room**

**MOST SUCCESSFUL EXHIBITOR - Ribbon & Prize \$25 - Donated by The 4275 Collective**

**ENCOURAGEMENT AWARD - Ribbon & Prize - Donated by Canungra Post Office**

**JUDGES CHOICE - Ribbon & Gift - Donated by P & L Sutherland**

Class 1321 Scrapbooking Layout

Class 1322 Scrapbooking/Papercraft off the page - any medium

Class 1323 Sculpture - any medium

Class 1324 Woodwork - Any article

Class 1325 Pyrography (Wood Burning)

Class 1326 Decorated Mask/Shoes/Jewellery Box/Plaque

Class 1327 Lego/Brick Diorama (12 - 17 years)

First Prize \$10 Donated by ROOM 27 HAIR STUDIO

LEGO RULES Lego/Brick Diorama (12-17 years)

Theme: Artists own original design or creation, no box sets using instructions. Exhibit MUST be on a tray or firm base for ease of movement. Maximum size is 40cm x 40cm x 40cm. Any brand of plastic construction brick may be used. Only one Diorama per person.

Class 1328 Lego/Brick Model/Sculpture (12-17 years)

First Prize \$10 Donated by ROOM 27 HAIR STUDIO

LEGO RULES Lego/Brick Model/Sculpture (12-17 years)

Any topic, artists own original design or creation, no boxed sets using instructions. Exhibit

MUST be on a tray or firm base for ease of movement. Maximum size is 28cm x 28 cm x 28cm. Any brand of plastic construction brick may be used.

Class 1329 Art Ability (Working with people with disabilities, Individual Art Ability) Any subject - Any medium

First Prize \$10 Donated by ROOM 27 HAIR STUDIO

Class 1330 Indigenous Australian Art - (Restricted to Indigenous Australian Entrants) Any Subject, any medium or mixed media



# STOCKMANS SUPPLIES



Stockman's Supplies are a proud family business, supplying farrier tools and equipment Australia wide since 1973.

Enjoy the Canungra Rodeo and you can visit us in store, or check out our extensive catalogue online.

[www.stockmanssupplies.com](http://www.stockmanssupplies.com)

Brisbane - Townsville - Toowoomba - Tamworth

# FAT CATTLE – HOOF CLASSES

The Fat Cattle (sometimes called 'Prime Cattle') Competition is for a class of beef cattle of any age but usually greater than one year, well-covered and judged ready for slaughter to provide prime cuts of beef.

The Fat Cattle Classes are judged before Show Day on Monday 21st August 2023 at the Canungra Showground. Cattle are delivered to the Showground in the morning of the competition where the judge will view them before delivering his results to the waiting crowd of local graziers.

The Fat Cattle judging is traditionally a day for the local graziers. They get together for a chat and lunch after the competition is finished and presentations have been completed.

It is a very friendly competition at Canungra, however the entrants take a lot of pride in their beasts and there is a certain amount of prestige in winning any of the classes, and especially taking out the coveted 'Champion Beast of Show' or 'Most Successful Exhibitor' awards.

The cattle entered are sold at the Cattle Sales the day after judging.

Entries Close 21st of August at 11am. Judging to commence at 12noon on the 21th of August.

Entries online at [www.canungrashowsociety.org](http://www.canungrashowsociety.org) or Phone Dan Piacun or Chris Browning E: [canungrashowsociety@gmail.com](mailto:canungrashowsociety@gmail.com) or ph: 0403 278 556

**Fat Cattle classes  
proudly sponsored by**

**BEECHMONT  
CATTLE Co.**



Great country,  
Great cattle.



**ALBERT RIVER  
W I N E S**

Entries Close 21st of August at 11am. Judging to commence at 12noon on the 21th of August.

Entries online at [www.canungrashowsociety.org](http://www.canungrashowsociety.org) or Phone Dan Piacun or Chris Browning E: [canungrashowsociety@gmail.com](mailto:canungrashowsociety@gmail.com) or ph: 0403 278 556

Exhibitors Name: ..... Phone Number: .....

Address:.....

ABN:..... Registered for GST:  YES  NO

Class	Exhibitor's Name	Entry Fee

# FAT CATTLE – HOOF CLASSES

**STEWARDS** - MR DAN PIACUN - Ph: 0427 627 875 / MR CHRIS BROWNING 0409 038 477

**ENTRY FEE** \$2.00 per entry - ENTRIES CLOSE MONDAY 21st AUGUST 2023 AT 9AM.

- Judging to take place at the Rodeo Arena, Canungra Showgrounds from 12noon on Monday 21st August 2023.
- Cattle to be delivered to Rodeo Yards no later than 9am Monday 21th August 2023.
- All winners receive trophies. Ribbons for 1st, 2nd, 3rd. Refreshments to follow the presentation.
- All exhibits must be sold on Tuesday 22nd August at Moreton SaleYards.
- Entries to: Secretary, Canungra AH&I Society Inc, PO Box 47, CANUNGRA QLD 4275
- Reserve Champion - Pasture or grass feed. Trophy & Prize \$80. Sponsor - Doug and Jenny Bradfield.
- Champion Beast of Show - Pasture or grass fed. Prize: \$80 + 1 bottle of wine. Sponsor - Finch Family.
- Most Successful Exhibitor of the Show. Perpetual Trophy & Prize \$250. Sponsor - Beechmont Cattle Co.

Please be aware, any evidence of grain assistance in any grass/ pasture fed classes will be disqualified.

## Fat Cattle - Hoof Classes

Class 1500 Single Bullock - over 550kg Pasture or grass fed. Prize: \$80 + 1 bottle of wine. Sponsor – Mick & Jenny Corcoran.

Class 1501 Single Steer - up to 500kg (Showing no more than 2 perm teeth) Pasture or grass fed.

Prize: \$80 + 1 bottle of wine. Sponsor – Finch Earthmoving

Class 1502 Single Heifer - up to 500kg (Showing no more than 2 perm teeth). Pasture or grass fed.

Prize: \$80 + 1 bottle of wine. Sponsor – Moovin' Stock.

Class 1503 Single Prime Cow (Beef Breed. Pasture or grass fed). Prize: \$80 + 1 bottle of wine. Sponsor - Nation Wide Engineering - Dan and Janine Piacun

Class 1504 Single Mother Vealer (Pasture or grass fed).

Prize: \$80 + 1 bottle of wine. Sponsor - Boyd, O'Brien, Bartholomew & Co.



Queensland Government

**ONLINE ENTRIES ACCEPTED AT**  
**[www.canungrashowsociety.org](http://www.canungrashowsociety.org)**

**AQUIS**  
**STALLIONS**

**BREEDING WORLD-CLASS**  
**THOROUGHBREDS IN CANUNGRA**





# STUD BEEF CATTLE

**CHIEF STEWARD:** Steve Moriarty

Email: [canungrashowsociety@gmail.com](mailto:canungrashowsociety@gmail.com)

**ENTRY FEE** \$2.20 per animal. Junior Handler Free.  
Prizemoney : 1st: \$15, 2nd: \$10, 3rd: \$5.

- Judging to commence at 8:30am.
- All bulls over 12 months to have a nose ring. Bulls under 12 months must have a nose clip, and all cattle must be tractable.
- Age of cattle to be as at 1st August 2023
- Stewards may authorise mouthing of the exhibits if there is any doubt as to the correctness of age.
- All cattle must be registered or eligible for registration in the Herd Book (except led steer).
- Entries close Monday 21st August 2023 using stud beef entry form or online [www.canungrashowsociety.org](http://www.canungrashowsociety.org).
- Ribbons awarded for 1st, 2nd, 3rd.
- Individual breeds may be judged in their own right according to number of entries on the day. To be decided on the day at the stewards discretion.
- In the instance of insufficient numbers the Judge reserves the right to withhold a first prize if he/she feels the exhibit is not to first prize standard.

- Please note: ALL TRUCKS ARE TO BE UNLOADED AND MOVED AWAY FROM LOADING RAMP AREA IMMEDIATELY. TRUCKS TO BE PARKED WITHIN THE SHOW GROUNDS NEAR THE RODEO ARENA. Canungra Show Society no longer have use of the parking area across the road from the entrance, therefore space will be at a premium. Exhibitors are asked to comply with this request.

## Tropical

- Class 1750 Bull under 12 months
- Class 1751 Bull 12 to 18 months
- Champion Junior Tropical Bull
- Reserve Champion Junior Tropical Bull
- Class 1752 Bull 18 to 24 months
- Class 1753 Bull 24 months and over
- Champion Senior Tropical Bull
- Reserve Champion Senior Tropical Bull
- GRAND CHAMPION Tropical BULL
- Class 1754 Female under 12 months.
- Class 1755 Female 12 to 18 months.
- Champion Junior Tropical Heifer
- Reserve Champion Junior Tropical Heifer

Entries close: 23rd of August 2023. Email entries to [Canungrashowsociety@gmail.com](mailto:Canungrashowsociety@gmail.com) or enter online at [www.canungrashowsociety.org](http://www.canungrashowsociety.org)

Exhibitors Name: ..... Phone:.....

Address of Stud: .....

Postal Address:.....

Breed of Entrant: .....

Class	Name of Animal	Date of Birth	Sire	Dam	Entry Fee

# STUD BEEF CATTLE

Class 1756 Female 18 to 24 months.

Class 1757 Female 24 months and over.

Champion Senior Tropical Female

Reserve Champion Senior Tropical Female

GRAND CHAMPION Tropical FEMALE

Class 1758 Pair of Bulls

Class 1759 Pair of females (interbred)

Class 1760 Cow and Calf (interbred)

Class 1761 Exhibitors Group

- Three exhibits owned by the exhibitor when being judged. Must be exhibited in general class.

Class 1762 Sires Progeny - Group of 3 animals - both sexes to be represented, sired by the same bull (interbred)

## European

Class 1763 Bull under 12 months

Class 1764 Bull 12 to 18 months

Champion Junior European Bull

Reserve Champion Junior European Bull

Class 1765 Bull 18 to 24 months

Class 1766 Bull 24 months and over

Champion Senior European Bull

Reserve Champion Senior European Bull

GRAND CHAMPION European Bull

Class 1767 Female under 12 months.

Class 1768 Female 12 to 18 months

Champion Junior European Heifer

Reserve Champion Junior European Heifer

Class 1769 Female 18 to 24 months.

Class 1770 Female 24 months and over.

Champion Senior European Female

Reserve Champion Senior European Female

GRAND CHAMPION European FEMALE

Class 1771 Pair of Bulls

Class 1772 Pair of females

Class 1773 Cow and Calf (interbred)

Class 1774 Exhibitors Group

- Three exhibits owned by the exhibitor when being judged. Must be exhibited in general class.

Class 1775 Sires Progeny - Group of 3 animals

- both sexes to be represented, sired by the same bull (interbred).



# MACHINE HIRE

## MACHINES FOR DRY HIRE

Husband and wife team offering dry hire machines to get your jobs done around the place

**COMPETITIVE PRICES AND  
FREE LOCAL DELIVERY**

- We have Excavators, Skid Steer, Log Splitter, Trailers and Firefighting units
- Our excavators have Augers and Rock Grab Attachments

**1 Wagonwheel Rd  
BOYLAND**

GIVE US A CALL TODAY  
TO BOOK IN

**0437 945 201 nrqmachinehire.com**

# STUD BEEF CATTLE

## British/Small Breeds combined

- Class 1776 Bull under 12 months
  - Class 1777 Bull 12 to 18 months
  - Champion Junior British/Small Bull
  - Reserve Champion Junior British/Small Bull
  - Class 1778 Bull 18 to 24 months
  - Class 1779 Bull 24 months and over
  - Champion Senior British/Small Bull
  - Reserve Champion Senior British/Small Bull
  - GRAND CHAMPION British/Small Bull
  - Class 1780 Female under 12 months.
  - Class 1781 Female 12 to 18 months.
  - Champion Junior British/Small Heifer
  - Reserve Champion Junior British/Small Heifer
  - Class 1782 Female 18 to 24 months.
  - Class 1783 Female 24 months and over.
  - Champion Senior British/Small Female
  - Reserve Champion Senior British/Small Female
  - GRAND CHAMPION British/Small FEMALE
  - Class 1784 Pair of Bulls
  - Class 1785 Pair of females
  - Class 1786 Cow and Calf (interbred)
  - Class 1787 Exhibitors Group
- Three exhibits owned by the exhibitor when being

judged. Must be exhibited in general class.

Class 1788 Sires Progeny - Group of 3 animals - both sexes to be represented, sired by the same bull (interbred).

## All Breeds

Led Steer Competition

Class 1789 Led Steer - Must be milk teeth

Date of Birth and name to be nominated on entry - Sash.

SUPREME CHAMPION BULL OF THE SHOW

Supreme Sash

SUPREME CHAMPION FEMALE OF THE SHOW

Supreme Sash.

SUPREME EXHIBIT OF THE SHOW - \$50

\$50 plus Sash.

Mark Hunt Memorial Junior Handler

Entries taken on the day. Entry: Free. Prizemoney: 1st \$5, 2nd \$3, 3rd \$2, 4th Ribbon only.

- All winners will compete for 'Champion Handler' - Trophy to be awarded.

Class 1790 Under 18 years

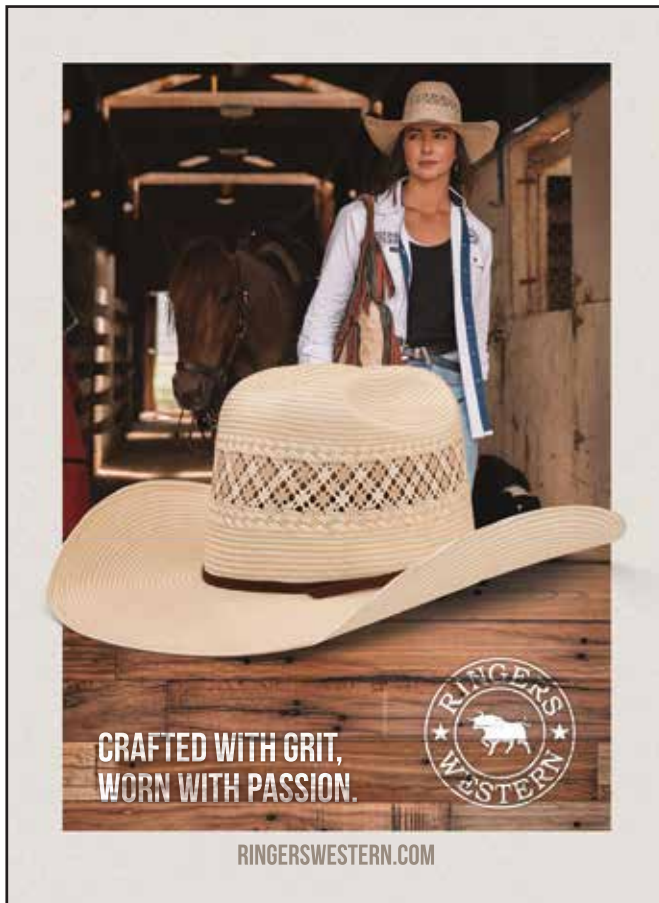
Class 1791 Under 25 years

CHAMPION HANDLER

Junior & Novice Judge

Class 1792 Under 16 years

Class 1793 Open



CANUNGRA SHOW SOCIETY SINCE 1938

CANUNGRA MENS SHED Established 2021

CANUNGRA RODEO

CANUNGRA SHOW Family Fun!

BLANC®  
blanccreation.com

Proudly supporting the  
Canungra Business Community  
- your local design agency

07 5543 4565 | studio@blanccreation.com



# TRACTORPULL

## Competition



## How it Works!

- **SENIOR COMPETITION (MEN'S AND WOMEN'S)**  
- Teams of 12 register to pull a John Deere Tractor over 20 metres
- **JUNIOR COMPETITION**  
- Teams of 4 register to pull a Boomer tractor over 20 metres
- Each team gets two 'pulls' and the fastest time counts (A handicap system will be in place for the junior competition)
- The prize money goes to the nominated community sporting club or organisation
- \$2250 prize money on offer thanks to NRQ Machine Hire and Wired Rite Electrical. 2 x \$150 Gift vouchers from Ringers Western
- Event will take place during the CANUNGRA SHOW 26th August 2023 at the Canungra Showgrounds
- No spikes to be worn, entrants can only participate in one team

### SENIOR COMPETITION

12 Adults pull a 12 tonne tractor 20 metres  
Fastest time wins the prize money for their nominated local sporting club or community group.

**Prize Men's:** \$1,000  
Plus \$150 Ringers Western Gift Voucher

**Prize Women's:** \$1,000  
Plus \$150 Ringers Western Gift Voucher

### JUNIOR COMPETITION

4 Juniors pull a 1.8 tonne tractor 20 metres.  
Fastest time wins the prize money for their nominated local sporting club or community group.

**Prize:** \$250



MACHINE HIRE



WIRED RITE  
ELECTRICAL  
SOLAR & AIR CONDITIONING



The Junior Competition will commence at 4pm, the Senior Competition will commence at 4:30pm. Entrants will need to pay entry into the Canungra Show to compete. Entry to the Canungra Show is \$15 for adults and children under the age of 11 are free.

**PLEASE NOTE:** All team members will be asked to sign a waiver prior to competing in the event. If you have any members that are under 18 years of age, a parent/guardian will need to sign the waiver on their behalf. Participation in the Senior Competition is not recommended for persons under 16 years of age. Junior Competition is for children between the ages of 10-15.



Register your team online today!  
[www.canungrashowsociety.org](http://www.canungrashowsociety.org)

Forget the chocolate drive fundraisers, grab a team and win some money for your group!



# HORSES

## **CHIEF RING STEWARD** - Lynn Porter 0423 902 407

Entries Taken on the day of the Show or online until 23rd August 2023 for all Horse Events.

WE ENCOURAGE YOU TO PLEASE DO YOUR ENTRIES ONLINE FOR ALL HORSE CLASSES, THIS WILL MAKE YOUR DAY RUN SMOOTHER AS YOUR CLASS TICKETS WILL BE READY ON THE MORNING OF THE SHOW TO PICKUP FROM THE ENTRY WINDOW & WILL ALREADY BE ON THE JUDGES SCORING SHEETS.

For online entries visit [www.canungrashowsociety.org](http://www.canungrashowsociety.org)

If you enter online you will be issued with your class entry tickets from the secretary's box on the morning of the show, this will save you time filling out tickets for each class you enter.

**ENTRY FEE:** \$4. Prizemoney: 1st - \$6, 2nd - \$4, 3rd - ribbon (unless otherwise stated).

**SUPREME BREED LED OF SHOW** - Garland and Prize money \$50 - All breeds LED Supreme of Canungra Show eligible to compete. If no Supreme in your section, then Champion of that section is entitled to compete. To be judge at the completion of the Led Breed classes.

### **Conditions of Entry**

1. Current bio-security regulations do apply.
2. Events to be run as per schedule. It is the competitor's responsibility to present his or herself when the class is called.
3. Pony Hacks under 12.2hh are to be ridden by Juveniles under 17 years.
4. In local classes, the area is defined by the boundaries of the 4275 postcode area. The owner, rider and horse of any entry in a local event must be resident in the area for a period of three months prior to the date of the Show. The winner of a Local Class is eligible to enter any Champion if it complies with all other requirements.
5. Stallions & Colts are not eligible to enter Pony Hack, Galloway Hack or Open Hack classes.

6. Stallions Led in three years and over, must be shown in a headstall with a bit or chain. A halter will not be permitted. They must be led by an adult. All riders and handlers of stallions must be 18 years and over.
7. Correct riding attire to be worn in appropriate classes including an approved riding helmet which complies with the current Australian Standard.
8. Riders competing in jumping events MUST wear a skull cap with an effective chin strap.
9. All competitors must comply with acceptable safety practices.
10. All competitors ride at THEIR OWN RISK—the Canungra AH and I Society Inc will not accept any liability for any accident, loss or injury to horses, riders or spectators.
11. NO class will be delayed for any competitor under any circumstances.
12. NO electric fences will be permitted on the grounds.
13. NO person, other than those in charge of a horse are allowed in the ring, alley or warm up area.
14. MAIDEN is a Pony, Galloway or Hack that has never won a 1st place at an agricultural show.
15. NOVICE is a Pony, Galloway or Hack that has never won a open Championship at an agricultural show.
16. PLEASURE HACK to be ridden is a snaffle bit and, in the judge's opinion, to be suitable for comfortable riding away from the show ring.
17. Horse may not compete in both Hack and Hunter Classes.
18. Ribbons will be awarded to third place in each event.
19. Prize money will be awarded to first, second and third place except where otherwise stated.
20. All competitors must pay to enter the grounds.
21. Entry fees are not refundable.
22. All prize winners of open events are eligible to compete for Championship in their respective sections without special entry.
23. All competitors must fill in an entry card. ENTRY FEE MUST BE PAID BEFORE COMPETING.
24. Exhibits entered in the wrong class by an exhibitor may be transferred to the correct class by the Steward on the direction of the Judge/Judges.
25. The Stewards shall attend on Judges and afford any information required, but shall not do or say anything to influence their decision. They shall not reveal the name of the exhibitor or repeat the remarks of the Judge.
26. Registration papers must be produced on request. Current membership of exhibitor must also be available on request.



**ACS Engineers**  
CIVIL | ENVIRONMENTAL | PROJECT MANAGEMENT

Providing Professional Engineering Services to the Scenic Rim

07 5541 3500  
[www.acsengineers.com.au](http://www.acsengineers.com.au)

Proud Sponsors of the Canungra Show & Rodeo



# HORSES

27. Judges have the power to disqualify any exhibit, which in their opinion does not comply with the regulations and shall inform the Stewards of the reason which shall be recorded in the award book.
28. The Committee reserves the right to change the order of the classes before or during the show.
29. DISPUTES: Protests must be in writing accompanied by \$25 NON REFUNDABLE FEE, no later than one hour after the award. DISPUTES arising from any entry questioned or on any matter not provided for in the Rules of the Society will be referred to a Disputes Committee (comprising the Chief Ring Steward and two Committee Members) who will adjudicate thereon.
30. Classes to be called three times and if participants are not present judging will continue. No late arrivals accepted.
31. Prize money to be collected from the show office.
32. AGE of competitor (where age is a condition of eligibility) will be taken at the day of the Show.
33. PONIES - Height not to exceed 14 hands  
GALLOWAYS - Height 14 hands and not exceeding 15 hands  
HACKS - 15 hands and over
34. OWNERS AND COMPETITORS are responsible for the proper supervision of all exhibits at all times whilst on the Showgrounds. OWNERS AND COMPETITORS shall be held responsible for all damage caused by them or their exhibits whilst on the Showgrounds.
35. THE USE OF TRANQUILLIZERS AND/OR OTHER DRUGS IS PROHIBITED. Any OWNER AND/OR EXHIBITOR violating this rule will be dealt with by the Society. The Society may make or cause to be made any test of any Exhibit to determine whether any drug or stimulant has been administered to such an exhibit and may take possession of any such exhibit for any of the aforesaid purposes and detain such horse for such period as is deemed necessary.

## JUDGES:

Judges must be suitably attired in either riding clothes, ladies, neat street attire, men, suit or sports coat and tie and hat whilst judging. A judge shall not send a substitute judge without the permission of the show society concerned. A judge shall be reported to the Queensland Chamber of Agricultural Societies for failure to attend a show to which he or she is committed, or appear in time for the advertised commencement of the classes without reasonable cause. An exhibit is ineligible to compete if the competitor/exhibitor is a member of the judge's family. An exhibitor is ineligible to compete if the horse has been owned or leased by the judge, a member of his/her family, his or her employer or business partner within the last three months. An exhibitor is ineligible to compete if the competitor/exhibitor or his or her family has provided accommodation for the judge immediately prior to or during the show. An exhibitor is ineligible to compete if any part of the combination has been given tuition by the judge or his/her business partner within the last three months. An exhibitor is ineligible to compete, if the competitor/exhibitor has been employed by or has been partner of the judge, within the last three months. An exhibitor is ineligible to compete if the competitor/exhibitor has given tuition to the judge or trained a horse owned or leased by the judge within the last three months. A judge shall not visit the horse stables, nor the owner, nor inspect or discuss any horse entered in the show prior to or during the judging of the relevant section.



# HORSES

**ALL RINGS COMMENCE AT 8:30AM**

## RING 1

Sponsored by **Stockmans Supplies**

Pony Hacks, Riding Ponies RPSBS, Juvenile Riders, Welsh Mountain and Topsy classes.

WE ENCOURAGE YOU TO ENTER ONLINE FOR ALL HORSE EVENTS, CLASS TICKETS WILL BE PRINTED FOR YOU TO COLLECT ON THE MORNING OF THE SHOW - THIS SAVES YOU FILLING OUT EACH CLASS ENTRY TICKET.

**JUDGE:** Shirley Ross

## RIDING PONIES RPSBS

- All Ponies competing must be registered with R.P.S.B.S
- Exhibitors must be current financial members of R.P.S.B.S
- Show Hunter Ponies not eligible to compete in Riding Pony Classes
- Ponies up to 3 years old must be ridden in a snaffle bit

## RPSBS Led Classes

Class 2100 Riding Pony Stallion or Colt under 3 years not ex 14.2hh.

Class 2101 Riding Pony Stallion or Colt 3 years and over not ex 14.2hh.

Class 2102 Riding pony Mare or Filly under 3 years not ex 14.2hh.

Class 2103 Riding pony Mare or Filly 3 years and over not ex 14.2hh.

Class 2104 Riding pony Gelding under 3 years not ex 14.2hh

Class 2105 Riding pony gelding 3 years and over not ex 14.2hh

**Champion and Reserve Champion** Riding Pony

Class 2106 Show Hunter Mare under 3 years not ex 14.2hh

Class 2107 Show Hunter Mare 3 years and over not ex 14.2hh

Class 2108 Show Hunter Gelding under 3 years not ex 14.2hh

Class 2109 Show Hunter Gelding 3 years and over not ex 14.2hh

**Champion and Reserve Champion** Show Hunter Led

## WELSH MOUNTAIN PONIES

Welsh Mountain Ponies Section A and B

Class 2110 Welsh Mountain Colt under 3 years

Class 2111 Welsh Mountain Stallion 3 years and over

**Champion and Reserve Champion** Welsh Mountain Pony Stallion or Colt

Class 2112 Welsh Mountain Filly 3 years and under

Class 2113 Welsh Mountain Mare 3 years and over

**Champion and Reserve Champion** Welsh Mountain Pony Mare or Filly

Class 2114 Welsh Mountain Gelding under 3 Years

Class 2115 Welsh Mountain Gelding 3 years and over

**Champion and Reserve Champion** Welsh Mountain Pony Gelding

## SUPREME WELSH MOUNTAIN PONY OF SHOW

## Led Welsh Classes

Welsh Cobs Section C and D

Class 2116 Welsh Cob Colt under 3 years

Class 2117 Welsh Cob Stallion 3 years and over

**Champion and Reserve Champion** Welsh Cob Stallion or Colt

Class 2118 Welsh Cob Filly under 3 years

Class 2119 Welsh Cob Mare 3 years and over

**Champion and Reserve Champion** Welsh Cob Mare or Filly

Class 2120 Welsh Cob Gelding under 3 years

Class 2121 Welsh Cob Gelding 3 years and over

**Champion and Reserve Champion** Welsh Cob Gelding  
SUPREME LED WELSH EXHIBIT OF SHOW



35 CHRISTIE STREET,  
CANUNGRA  
M: 0400 477 818



**THE SHOE VAULT OPEN 7 DAYS**

# HORSES

## Led Part Welsh Section

Class 2122 Part Welsh Colt under 3 years

Class 2123 Part Welsh Stallion 3 years and over

**Champion and Reserve Champion** Part Welsh Stallion or Colt

Class 2124 Part Welsh Filly under 3 years

Class 2125 Part Welsh Mare 3 years and over

**Champion and Reserve Champion** Part Welsh Filly or Mare

Class 2126 Part Welsh Gelding under 3 years

Class 2127 Part Welsh Gelding 3 years and over

**Champion and Reserve Champion** Part Welsh Gelding  
SUPREME LED PART WELSH EXHIBIT OF SHOW

(All Part Welsh Champions to compete)

## RPSBS Under Saddle

Class 2128 Riding Pony Gelding under saddle not ex 14.2hh

Class 2129 Riding Pony Mare under saddle not ex 14.2hh

Class 2130 Pony Hunter under saddle not ex 13hh

Class 2131 Pony Hunter under saddle over 13hh not ex 14hh

Class 2132 Pony Hunter under saddle over 14hh not ex 14.2hh

**Champion and Reserve Champion** Under Saddle

## Ridden Welsh Section

• Welsh Section A B C and D eligible

Class 2133 Ridden Welsh Stallion

Class 2134 Ridden Welsh Mare

Class 2135 Ridden Welsh Gelding

**Champion and Reserve Champion** Ridden Welsh

Class 2136 Ridden Part Welsh Stallion

Class 2137 Ridden Part Welsh Mare

Class 2138 Ridden Part Welsh Gelding

**Champion and Reserve Champion** Ridden Part Welsh

## LED LINE CLASSES

Class 2155 Lead Line 6 years and under

Class 2156 Lead Line 7 - 10 years

## PONY HACK

• A novice horse or pony is not to have won a first place at a Royal Show or a Champion at an Agricultural Show

Class 2139 Local Pony Hack

Must reside within the Scenic Rim

Class 2140 Maiden under 12hh

Class 2141 Maiden Pony Hack 12hh not ex 13hh

Class 2142 Maiden Pony Hack 13hh not ex 14hh

Class 2143 Novice Pony Hack under 12hh

Class 2144 Novice Pony Hack 12hh not ex 13 hh

Class 2145 Novice Pony Hack 13hh not ex 14hh

**Champion and Reserve Champion** Pony Hack

Class 2146 Open Pony Hack under 12hh

Class 2147 Open Pony Hack 12hh - 13hh

Class 2148 Open Pony Hack 13hh - 13.2hh

Class 2149 Open Pony Hack 13.2hh - 14hh

Class 2150 Junior Pony Hack Rider under 16 years

Class 2151 Adult Pony Hack Rider 16 years and over

**Champion and Reserve Champion** Open Pony Hack

Class 2152 Pleasure Pony Hack

Class 2153 Pair Pony Hacks

Class 2154 Consolation Pony Hack - open to all unplaced Pony Hacks

SUPREME CHAMPION PONY HACK OF SHOW

## JUVENILE RIDERS

Class 2157 Girl & Boy Rider under 8 years

Class 2158 Girl & Boy Rider 8 years and under 11 years

Class 2159 Girl & Boy Rider 11 years & under 13 years

Class 2160 Girl & Boy Rider 13 years & under 16 years

**Champion and Reserve Champion** Girl or Boy Rider

## The Outpost Cafe

*The Hinterland's Favourite Cafe*



*Come and try our Award  
Winning Homemade Pies*



44 Christie Street, Canungra. Phone: 5543 5283. [www.theoutpostcafe.com.au](http://www.theoutpostcafe.com.au)

❖ Open 7 Days ❖ Breakfast ❖ Lunch ❖ Fresh Cakes ❖ Fine Coffee ❖ Dine-in & Takeaway ❖

# HORSES

## TOPSY CLASSES - Beginner & Lead Line

Class 2179 Fattest Pony

Prize - Gift Voucher donated by **Equinox Images**

Class 2180 Hairiest Pony

Class 2181 Best Walk

Class 2182 Longest Tail

Class 2183 Owner and pony look-alike

Class 2184 Best presented

Class 2185 Beginner Rider 6 years and under

Class 2186 Beginner rider 6 to 8 years

Class 2187 Beginner Rider 9 to 12 years

Class 2188 Beginner rider 13 to 16 years

Class 2189 Beginner rider 16 years plus

Class 2190 Nervous Nellies 16 years plus

Class 2191 Fancy Dress

Prize - Gift Voucher donated by **Equinox Images**

## RING 2

Sponsored by **Ringers Western**

Galloways, Standardbreds, Arabians, Derivatives, Heavy Horses, Friesians and Part-Friesians

WE ENCOURAGE YOU TO ENTER ONLINE FOR ALL HORSE EVENTS, CLASS TICKETS WILL BE PRINTED FOR YOU TO COLLECT ON THE MORNING OF THE SHOW - THIS SAVES YOU FILLING OUT EACH CLASS ENTRY TICKET.

**JUDGE** Kylie Senter

## STANDARDBREDS

Class 2200 Best presented

Class 2201 Colt 3 years and under

Class 2202 Stallion 4 years and over

**Champion and Reserve Champion** Standardbred Stallion/Colt

Class 2203 Filly 3 years and under

Class 2204 Mare 4 years and over

**Champion and Reserve Champion** Standardbred Mare/Filly

Class 2205 Gelding 3 years and under

Class 2206 Gelding 4 Years and over

**Champion and Reserve Champion** Standardbred Gelding

## SUPREME CHAMPION STANDARDBRED OF SHOW ARABIANS

Class 2207 Stallion any age led

Class 2208 Gelding 2 years and under led

Class 2209 Gelding over 2 years old

**Champion and Reserve Champion** Purebred Male

Class 2210 Filly 2 years and under led

Class 2211 Filly 2 years to 4 years led

Class 2212 Mare 4 years and over led

**Champion and Reserve Champion** Purebred Female  
SUPREME CHAMPION PUREBRED EXHIBIT OF SHOW

## Derivatives

Class 2213 Stallion 2 years & under

Class 2214 Stallion over 2 years

Class 2215 Gelding 2 years & under led

Class 2216 Gelding over 2 years

Champion Derivative Male

Class 2217 Filly 2 years & under led

Class 2218 Mare 2 years & over

**Champion and Reserve Champion** Derivative Female  
SUPREME CHAMPION DERIVATIVE EXHIBIT OF SHOW

## CLYDESDALE AND HEAVY HORSES

Class 2219 Best Presented Clydesdale & Heavy Horse & Handler

Class 2220 Colt under 4 years led

Class 2221 Stallion 4 years and over led

**Champion and Reserve Champion** Clydesdale & Heavy



**Strong local knowledge for  
best results**

**Surveying**

**Town Planning**

**Project Management**

**Operating since 1993**

 **(07) 5541 4722**  **www.kellynet.com.au**

 **111 Brisbane Street, Beaudesert**



# HORSES

Horses Stallion or Colt

Class 2222 Filly under 4 years led

Class 2223 Mare 4 years and over led

**Champion and Reserve Champion** Clydesdale & Heavy Horses Mare or Filly

Class 2224 Gelding under 4 years led

Class 2225 Gelding 4 years and over

**Champion and Reserve Champion** Clydesdale & Heavy Horses Gelding

Class 2226 Heavy Horse/Clydesdale under saddle

## FRIESIANS

Class 2227 Best mane and tail

Class 2228 Colt under 4 years led

Class 2229 Stallion 4 years and over led

**Champion and Reserve Champion** Friesian Stallion or Colt

Class 2230 Filly under 4 years led

Class 2231 Mare 4 years and over led

**Champion and Reserve Champion** Friesian Mare or Filly

Class 2232 Gelding under 4 years led

Class 2233 Gelding 4 years and over

**Champion and Reserve Champion** Friesian Gelding

SUPREME CHAMPION FRIESIAN OF SHOW

## Part-Friesians

Class 2234 Best mane and tail

Class 2235 Colt under 4 years led

Class 2236 Stallion 4 years & over led

**Champion and Reserve Champion** Part-Friesian Stallion or Colt

Class 2237 Filly under 4 years led

Class 2238 Mare 4 years & over led

**Champion and Reserve Champion** Part-Friesian Mare or Filly

Class 2239 Gelding under 4 years led

Class 2240 Gelding 4 years and over led

**Champion and Reserve Champion** Part-Friesian Gelding

SUPREME CHAMPION PART FRIESIAN OF SHOW

Rug donated by Australian Friesian Warmblood Horse Society

## Ridden Standardbred

Class 2241 Novice Walk Trot

Class 2242 Open Walk Trot

Class 2243 Open Ridden

## Friesians Under Saddle

Class 2244 Friesian under saddle

Class 2245 Part-Friesian under saddle

Class 2246 Friesian Ridden Costume

Class 2247 Part-Friesian Ridden Costume

## Arabians Under Saddle

Class 2248 Pure & Derivative Maiden under Saddle

Class 2249 Pure & Derivative Stallion under Saddle

Class 2250 Pure & Derivative Mare under Saddle

Class 2251 Pure & Derivative Gelding under Saddle

**Champion and Reserve Champion** Arabian Under Saddle

## GALLOWAY HACKS

Class 2252 Local Galloway Hack

Must reside within the Scenic Rim

Class 2253 Maiden Galloway Hack

Class 2254 Novice Galloway Hack 14 to 14.2hh

Class 2255 Novice Galloway Hack 14.2hh -15hh

Class 2256 Open Galloway Hack 14hh -14.2hh

Class 2257 Open Galloway Hack 14.2hh -15hh

Class 2258 Ladies Galloway Hack - Rider to be 16 years and over

Class 2259 Gents Galloway Hack - Rider to be 16 years and over

**Champion and Reserve Champion** Open Galloway Hack

Class 2260 Junior Galloway Hack - Rider to be under 16 years

SUPREME CHAMPION GALLOWAY HACK OF SHOW

Class 2261 Pleasure Galloway Hack

Class 2262 Pair of Galloway Hacks

Class 2263 Consolation Galloway Hacks

• Open to all unplaced Galloways

**Champion and Reserve Champion** Galloway Hack





# HORSES

## RING 3

Sponsored by **Canungra Hardware**

Thoroughbreds, Warmbloods, Miniature Horse, Shetlands, Hacks, Show Hunters,

AHHA Member Classes and Rider Classes.

WE ENCOURAGE YOU TO ENTER ONLINE FOR ALL HORSE EVENTS, CLASS TICKETS WILL BE PRINTED FOR YOU TO COLLECT ON THE MORNING OF THE SHOW - THIS SAVES YOU FILLING OUT EACH CLASS ENTRY TICKET

**JUDGE** Julie Shiels

## THOROUGHBREDS

**SUPREME CHAMPION THOROUGHBRED OF THE SHOW** - Prize Money \$350 Sponsored by Warrandale Stud

Class 2300 Colt under 3 years

Class 2301 Stallion 3 years & over to be led

**Champion Thoroughbred Stallion or Colt** - Prize money \$100 sponsored by Warrandale Stud

**Reserve Champion Thoroughbred Stallion or Colt** - Prize money \$50 sponsored by Warrandale Stud

Class 2302 Filly under 3 years

Class 2303 Mare 3 years and over

**Champion Thoroughbred Filly or Mare** - Prize money \$100 sponsored by Warrandale Stud

**Reserve Champion Thoroughbred Filly or Mare** - Prize money \$50 sponsored by Warrandale Stud

Class 2304 Gelding under 3 years

Class 2305 Gelding 3 years and over

**Champion Thoroughbred Gelding** - Prize money \$100 sponsored by Warrandale Stud

**Reserve Champion Thoroughbred Gelding** - Prize money \$50 sponsored by Warrandale Stud

## WARMBLOOD

Class 2306 Young Stock under 3 (Filly, Colt and Gelding)

Class 2307 Stallion 4 years and over

Class 2308 Mare 4 years and over

Class 2309 Gelding 4 years and over

**Champion and Reserve Champion** Warmblood

## MINIATURE HORSES

Miniature Horse under 34"

Class 2310 Colt under 2 years

Class 2311 Stallion/Colt 2 years and over

**Champion and Reserve Champion** Miniature Horse Stallion/Colt

Class 2312 Filly under 2 years

Class 2313 Mare/Filly 2 years and over

**Champion and Reserve Champion** Miniature Horse Mare/Filly

Class 2314 Gelding under 2 years

Class 2315 Gelding 2 years and over

**Champion and Reserve Champion** Miniature Horse Gelding

SUPREME MINIATURE HORSE EXHIBIT OF SHOW

Small Horse under 38"

Class 2316 Colt under 2 years

Class 2317 Stallion/Colt 2 years and over

**Champion and Reserve Champion** Small Horse Stallion/Colt

Class 2318 Filly under 2 years

Class 2319 Mare/Filly 2 years and over

**Champion and Reserve Champion** Small Horse Mare/Filly

Class 2320 Gelding under 2 years

Class 2321 Gelding 2 years and over

**Champion and Reserve Champion** Small Horse Gelding

SUPREME SMALL HORSE EXHIBIT OF SHOW

Little Horse 38" to 42"

Class 2322 Yearling

Class 2323 2 years

Class 2324 3 years & over

**Champion and Reserve Champion** Little Horse

## SHETLAND PONIES

Class 2325 Stallion and Colt

Class 2326 Mare and Filly

Class 2327 Gelding

**Champion and Reserve Champion** Shetland Pony

## HACKS

Class 2328 Local Hack 15hh and over

Must reside within the Scenic Rim

Class 2329 Maiden Hack 15hh - 16hh

Class 2330 Maiden Hack over 16hh

Class 2331 Novice Hack 15hh - 16hh

Class 2332 Novice Hack over 16hh



# HORSES

## **Champion and Reserve Champion** Novice Hack

Class 2333 Open Hack 15hh - 15.2hh

Class 2334 Open Hack 15.2hh - 16hh

Class 2335 Open Hack 16hh & over

## **Champion and Reserve Champion** Open Hack

Class 2336 Junior Hack - Rider to be under 16 years

Class 2337 Ladies Hack - Rider to be 16 years and over

Class 2338 Gents Hack - rider to be 16 years and over

**SUPREME CHAMPION OPEN HACK OF SHOW**

Class 2339 Pleasure Hack

Class 2340 Pair of Hacks

Class 2341 Consolation Hack

## **SHOW HUNTERS**

### **Led Show Hunters**

Class 2342 Led Show Hunter Pony

Class 2343 Led Show Hunter Galloway

Class 2344 Led Show Hunter Hack

## **Champion and Reserve Champion** Led Show Hunter

Ridden Show Hunters

Class 2345 Ridden Show Hunter Pony ne 14hh

Class 2346 Intermediate Show Hunter Pony ne 14hh

Class 2347 Open Show Hunter Pony ne 13hh

Class 2348 Open Show Hunter Pony over 13hh & ne 14hh

## **Champion and Reserve Champion** Show Hunter Pony

Class 2349 Intermediate Show Hunter Galloway over 14hh and ne 15hh

Class 2350 Open Show Hunter Galloway over 14hh & ne 14.2hh

Class 2351 Open Show Hunter Galloway over 14.2hh & ne 15hh

## **Champion and Reserve Champion** Show Hunter Galloway

Class 2352 Intermediate Show Hunter Horse over 15hh

Class 2353 Open Show Hunter Horse over 15hh & ne 16hh

Class 2354 Open Show Hunter Horse over 16hh

## **Champion and Reserve Champion** Show Hunter Hack

**SUPREME SHOW HUNTER HORSE OF SHOW**

**AHHA MEMBER CLASSES**

**NO CARD NO RIDE NO EXCEPTION**

Class 2355 AHHA Led Show Hunter

Class 2356 AHHA Ridden Show Hunter Horse

Class 2357 AHHA Ridden Show Hunter Galloway

Class 2358 AHHA Ridden Show Hunter Pony

## **Champion and Reserve Champion** AHHA Ridden Show Hunter

## **Open Rider Classes**

Class 2359 Junior Lady Rider over 16 years and under 21 years

Class 2360 Lady Rider 21 years and over

## **Champion and Reserve Champion** Lady Rider

Class 2361 Junior Gentleman Rider 16 years and under 21 years

Class 2362 Gentleman Rider 21 years and over

## **Champion and Reserve Champion** Gentleman Rider

## **RING 4**

Sponsored by **Canungra Hardware**

Quarter Horses, Appaloosas, Paints, Paint-Bred, Palominos, Buckskins, Any Other Dilutes, Non-Solid Dilutes, Quarter Ponies, Under Saddle, Pintos and Stock Horses.

WE ENCOURAGE YOU TO ENTER ONLINE FOR ALL HORSE EVENTS, CLASS TICKETS WILL BE PRINTED FOR YOU TO COLLECT ON THE MORNING OF THE SHOW - THIS SAVES YOU FILLING OUT EACH CLASS ENTRY TICKET.

**JUDGE** Mieke Bigg

## **QUARTER HORSES**

Class 2400 Colt under 2 years led

Class 2401 Stallion 2 years & over led

**Champion and Reserve Champion** Quarter Horse Stallion or Colt

Class 2402 Filly under 2 years led

Class 2403 Mare 2 years & over led

**Champion and Reserve Champion** Quarter Horse Mare or Filly

Class 2404 Gelding under 2 years led

Class 2405 Gelding 2 years and over led

**Champion and Reserve Champion** Quarter Horse Gelding

## **SUPREME CHAMPION QUARTER HORSE OF SHOW**

## **APPALOOSAS**

Class 2406 Best Presented Appaloosa

Class 2407 Most Colourful Appaloosa

**fairdream.**

CONSTRUCTION CONSULTANCY

# HORSES

Class 2408 Led Colt - 2 years and under  
Class 2409 Led Stallion - 3 years and over  
Class 2410 Led Filly 2 years and under  
Class 2411 Led Mare - 3 years and over  
Class 2412 Led Gelding - Any age

**Champion and Reserve Champion** Appaloosa

## PAINTS

Class 2413 Colt Under 2 years  
Class 2414 Stallion or Colt 2 years and over  
Class 2415 Filly Under 2 years  
Class 2416 Mare or Filly 2 years and over  
Class 2417 Gelding under 2 years  
Class 2418 Gelding 2 years and over

**Champion and Reserve Champion** Paint

## PAINT-BRED

Class 2419 Colt under 2 years  
Class 2420 Stallion or Colt 2 years and over  
Class 2421 Filly under 2 years  
Class 2422 Mare or Filly 2 years and over  
Class 2423 Gelding under 2 years  
Class 2424 Gelding 2 years and over

**Champion and Reserve Champion** Paint Bred

## PALOMINOS

Class 2425 Stallion or Colt to be led  
Class 2426 Mare or Filly to be led  
Class 2427 Gelding any age to be led

**Champion and Reserve Champion** Palomino

## BUCKSKINS

Class 2428 Stallion or Colt to be led  
Class 2429 Mare or Filly to be led  
Class 2430 Gelding any age to be led

**Champion and Reserve Champion** Buckskin

## Any Other Dilutes

Class 2431 Stallion or Colt to be led  
Class 2432 Mare or filly to be led  
Class 2433 Gelding any age to be led

**Champion and Reserve Champion** Dilute

## Non-Solid Dilutes

Class 2434 Stallion or Colt to be led  
Class 2435 Mare or filly to be led  
Class 2436 Gelding any age to be led  
Champion and Reserve Non-Solid Dilute

## Quarter Pony Classes

Class 2437 Best Presented Quarter Pony & Handler  
Class 2438 Best Solid Quarter Pony  
Class 2439 Best Broken Coloured Quarter Pony  
Class 2440 Colt 3 years & under  
Class 2441 Stallion 4 years & over

**Champion and Reserve Champion** Quarter Pony Stallion or Colt

Class 2442 Filly 3 years & under

Class 2443 Mare 4 years & over

**Champion and Reserve Champion** Quarter Pony Mare or Filly

Class 2444 Gelding 3 years & under

Class 2445 Gelding 4 years & over

**Champion and Reserve Champion** Quarter Pony Gelding

SUPREME CHAMPION LED QUARTER PONY OF SHOW

Over-Height Quarter Pony

Class 2446 Led Overheight Quarter Pony

Class 2447 Youth Handler

Class 2448 Adult Handler

## PINTO

- Open to any registered Pinto
- All Pintos must be registered with a Pinto Society, handlers and riders must be financial members

Class 2449 Best Presented Pinto & Handler

Class 2450 Best Marked Pinto

Class 2451 Led Colt - under 2

Class 2452 Led Colt or Stallion – 2 years and over

**Champion and Reserve Champion** Led Pinto Stallion or Colt

Class 2453 Led Filly – Under 2

Class 2454 Led Filly or Mare - 2 years and over

**Champion and Reserve Champion** Led Pinto Mare or Filly

Class 2455 Led Gelding – under 2

Class 2456 Led Gelding - 2 years and over

**Champion and Reserve Champion** Led Pinto Gelding

SUPREME CHAMPION PINTO OF SHOW

Class 2457 Youth Handler

Class 2458 A/O Handler

## Under Saddle

Class 2459 QUARTER HORSE under saddle

Class 2460 APPALOOSA under saddle

Class 2461 PAINT under saddle

Class 2462 PAINT BRED under saddle

Class 2463 PALOMINO under saddle

Class 2464 BUCKSKIN under saddle

Class 2465 Any Other Dilute under saddle

Class 2466 Non-Solid Dilute under saddle

Class 2467 Quarter Pony under saddle

Class 2468 Ridden over height Quarter Pony under saddle

Class 2469 PINTO under saddle

## STOCK HORSE

Trophy for Supreme Champion Australian Stock Horse, Sponsored & Presented by Sara Oaks Stud (J & M Gilbert)

# HORSES

Class 2470 Colt under 4 years led

Class 2471 Stallion 4 years and over led

**Champion and Reserve Champion** Stock Horse Stallion or Colt

Class 2472 Filly under 4 years led

Class 2473 Mare 4 years and over led

**Champion and Reserve Champion** Stock Horse Mare of Filly

Class 2474 LED Gelding under 4 years led

Class 2475 LED Gelding 4 years and over led

**Champion and Reserve Champion** Stock Horse Gelding

**SUPREME CHAMPION AUSTRALIAN STOCK HORSE OF THE SHOW**

Class 2476 ASH Hack under 15hh

Class 2477 ASH Hack over 15hh

Class 2478 Pleasure Hack

**Champion and Reserve Champion** Hack

Class 2479 Working Stallion

Class 2480 Working Mare

Class 2481 Working Gelding

**Champion and Reserve Champion** Working Stockhorse

Class 2482 ASH Lady Rider

Class 2483 ASH Gentleman Rider

Class 2484 Stockman's Turnout

## SHOW JUMPING

SHOWJUMPING - TO COMMENCE AT 8.30am

CONDITIONS OF ENTRY:

- ALL COMPETITORS MUST BE WEARING GATE ENTRY WRISTBANDS TO COMPETE
- All competitors must complete a horse health declaration upon nomination

### REGULATIONS:

1. All horses must be EFA registered.
2. All events will be judged under EFA rules
3. Performance cards must be produced on request
4. Paid entry cards must be available for judge to sign before prize money is given.

The Committee reserves the right to alter the program on the day.

**JUDGE DON SULLIVAN**

Class 2500 70cm Special two phase

Class 2501 80cm special two phase

Class 2502 90cm special two phase

Class 2503 1m special two phase

Class 2504 1.10m AM5

Class 2505 1.20m AM5

## Proud sponsors of the Canungra Show

When you choose to bank with Bendigo Bank, good things happen in your community.

Like our sponsorship of the Canungra Show.

And when you belong to one of Australia's biggest banks, good things happen with your banking too.

Feel good about who you bank with.

Find out more. Call 5543 5773 or search Bendigo Bank Canungra.



**Bendigo Bank**

Community Bank  
Canungra & District

Bendigo and Adelaide Bank Limited ABN 11 068 049 178, AFSL/Australian Credit Licence 237879 A1389134, OUT\_30692150, 01/08/2023



# AQUIS WOODCHOP PROGRAM

**CHIEF STEWARDS** - John Geiger 0417 290 652 and James Geiger 0402 192 897

**ENTRIES** close no later than 7th August 2023 with:

The Secretary

Email: [qldaxemensassn@outlook.com](mailto:qldaxemensassn@outlook.com)

Queensland Axemen's Association

47 Canowie Road

Jindalee QLD 4074

Program commences 9am on Saturday 26th August 2023

Proudly Sponsored by: Aquis - TJ Kelly Surveys Pty Ltd - Peter, John, James & Stephen Geiger

## Woodchop

"Limited to the first 21 axeman"

Class 4000 250mm Standing Handicap - Doug Adamson Memorial

Prizemoney: 1st - \$200, 2nd - \$150, 3rd - \$100

Class 4001 300mm Underhand Handicap

Prizemoney: 1st - \$200, 2nd - \$150, 3rd - \$100

Class 4002 300mm Standing Handicap

Prizemoney: 1st - \$200, 2nd - \$150, 3rd - \$100

Class 4003 275mm Underhand Handicap

Prizemoney: 1st - \$200, 2nd - \$150, 3rd - \$100

Class 4004 South-East Qld Standing Championship Ken Geiger Memorial (Trophy)

Prizemoney: 1st - \$300, 2nd - \$250, 3rd - \$200, 4th - \$150

Class 4005 Veterans 275mm Underhand Handicap

Prizemoney: 1st - \$200, 2nd - \$150, 3rd - \$100

Class 4006 Boys Underhand Handicap (under 18)

Prizemoney: 1st - \$60, 2nd - \$40, 3rd - \$20

Class 4007 2 Man Relay

Prizemoney: 1st - \$200, 2nd - \$150, 3rd - \$100, 4th - 60, 5th - \$40

Relay limited to the first 16 open axemen to nominate.

Class 4008 275mm Tree Felling Handicap

Prizemoney: 1st - \$200, 2nd - \$150, 3rd - \$100.

Limited to the first 6 axemen to nominate.

Class 4009 400mm Double Handed M Tooth Handicap

Prizemoney: 1st - \$150, 2nd - \$100, 3rd - \$50



**GUN SHED**  
BOUTIQUE GUN STORE

Where Quality Service meets Quality Products

Located in Helensvale, the boutique store brings together respect and passion, two key ingredients when it comes to all things hunting, fishing, outdoor adventuring and the environment.

Specialising in Hunting, Outdoors and Bird and Wildlife Mitigation Products.  
[www.thegunshedqld.com.au](http://www.thegunshedqld.com.au)



**2023 BUSHMANS CHALLENGE**

The Canungra show proudly presents the Goodwood Paint Horse Stud 2023 Bushmans Challenge

DO YOU HAVE WHAT IT TAKES TO COMPLETE THE COURSE WITH THE QUICKEST TIME?

**OVER \$1000 IN PRIZES**

TEAMS OF 2 16Y & OVER  
TEAMS OF 2 10Y & UNDER

PLEASE SEE JOANNE AT THE WOODCHOP TO SIGN UP. LIMITED TO 4 TEAMS PER EVENT. WAIVER TO BE SIGNED



# DOG SHOW

Held at Canungra show grounds. Commencing 9am.

## **Sponsored by: Canungra Hardware**

Stewards: Belinda Pearl & Kristelle Hojer

Entry: \$5 for Mixed Breed and Pure Breed classes.

Free for Junior Handler and Novelty classes. Ribbons for 1st to 3rd.

Ribbons for 1st, 2nd and 3rd. Prizes from Canungra Hardware

## **CONDITIONS OF ENTRY**

### **Entries taken on the day**

- Open to all types of vaccinated dogs. Puppies must be at least 4 months old as a precaution against infectious diseases.
- Dogs must be on a lead and under control at all times.
- Handlers 16 and under must be accompanied by an adult.
- Please note: Competing dogs will be given tags that will allow entry into Canungra Showground.
- Dogs without competitor tags will not be allowed into the Showground.
- This show is not affiliated with Dogs QLD

### **Puppy Sweepstakes**

6000. 4 months to 12 months - mixed or pure breed.

#### **Mixed Breed**

6001. Small dogs. Open to all mixed breed dogs measuring 30cm or less at the shoulder. Male/ female/ neuter. Winner receives ribbons.

6002. Medium dogs. Open to all mixed breed dogs measuring 31cm to 55cm at the shoulder. Male/ female/ neuter. Winner receives ribbons.

6003. Large dogs. Open to all mixed breed dogs measuring over 55cm at the shoulder. Male/ female/ neuter. Winner receives ribbons.

- Champion Mixed Breed. Winners receive ribbon & prize from Canungra Hardware.
- Reserve Champion Mixed Breed. Winners receive ribbon & prize from Canungra Hardware.

#### **Pure Breed**

- Male/female/neuter. Over 1 year old.

6004. Group 1 - Toy Breeds

(Affenpinscher, Australian Silky Terrier, Bichon Frise, Cavalier King Charles Spaniel, Chihuahua, Chinese Crested Dog, English Toy Terrier (Black & Tan), Italian Greyhound, Japanese Chin, King Charles Spaniel, Lowchen (Little Lion Dog), Maltese, Miniature Pinscher, Papillon, Pekingese, Pomeranian, Pug, Russian Toy, Yorkshire Terrier)

6005. Group 2 - Terriers

(Airedale Terrier, American Staffordshire Terrier, Australian Terrier, Bedlington Terrier, Border Terrier, Bull Terrier, Bull Terrier (Miniature), Cairn Terrier, Dandie Dinmont Terrier, Fox Terrier (Smooth), Fox Terrier (Wire), Irish Terrier, Jack Russell Terrier, Kerry Blue Terrier,

Manchester Terrier, Scottish Terrier, Skye Terrier, Soft Coated Wheaten Terrier, Welsh Terrier, West Highland White Terrier)

6006. Group 3 - Gun Dogs

(Chesapeake Bay Retriever, Clumber Spaniel, Cocker Spaniel, Curly Coated Retriever, English Setter, English Springer Spaniel, Flat Coated Retriever, German Shorthaired Pointer, German Wirehaired Pointer, Golden Retriever, Gordon Setter, Hungarian Vizsla, Irish Setter, Irish Water Spaniel, Labrador Retriever, Pointer, Spanish Water Dog, Sussex Spaniel, Weimaraner, Welsh Springer Spaniel)

6007. Group 4 - Hounds

(Afghan Hound, Basenji, Basset Hound, Beagle, Bloodhound, Borzoi, Dachshund, Finnish Spitz, Foxhound, Greyhound, Irish Wolfhound, Peruvian Hairless Dog, Pharaoh Hound, Rhodesian Ridgeback, Saluki, Whippet)

6008. Group 5 - Working Dogs

Australian Cattle Dog, Australian Kelpie, Australian Shepherd, Australian Stumpy Tail Cattle Dog, Bearded Collie, Belgian Shepherd Dog, Border Collie, Collie (Rough), Collie (Smooth), Dutch Shepherd Dog, German Shepherd Dog, German Shepherd Dog (Long Stock Coat), Komondor, Maremma Sheepdog, Old English Sheepdog, Puli, Pyrenean Sheepdog Longhaired, Shetland Sheepdog, Welsh Corgi)

6009. Group 6 - Utility

(Akita, Alaskan Malamute, Anatolian Shepherd Dog, Bernese Mountain Dog, Boxer, Bullmastiff, Dobermann, Dogue de Bordeaux, German Pinscher, Mastiff, Neapolitan Mastiff, Newfoundland, Portuguese Water Dog, Pyrenean Mastiff, Pyrenean Mountain Dog, Rottweiler, Samoyed, Schnauzer, Shiba Inu, Siberian Husky, Spanish Mastiff, St. Bernard, Tibetan Mastiff)

6010. Group 7 - Non-sporting

(Boston Terrier, British Bulldog, Cane Corso, Chow Chow, Dalmatian, German Spitz, Great Dane, Japanese Spitz, Keeshond, Lhasa Apso, Poodle (Miniature), Poodle (Standard), Poodle (Toy), Shar Pei, Shih Tzu, Tibetan Terrier, Xoloitzcuintle)

- Champion Pure Breed and Canungra Cup- Winner receive ribbon & prize from Canungra Hardware.
- Reserve Champion Pure Breed- Winner receive ribbon & prize from Canungra Hardware.

### **Junior Handler**

6011. 8-12 years old. Male or female handler.

6012. Under 8 years old. Male or female handler.

### **Novelty**

6013. Novelty Cutest Couple (Child and dog) Class.

6014. Novelty Fancy Dressed Dog.

6015. Novelty Pimp My Pooch.

6017. Novelty Trick-Star.

Competing dogs will be given tags that will allow entry into Canungra Showground.

# AUSTRALIAN MINIATURE GOATS

**JUDGE:** Mr Tom Byrne

**CHIEF STEWARD:** Mr Tim Thomas

**ENTRIES:** Entries close: Wednesday 16 August 2023 @ 6pm . Entries must be received by the close of entry date, NO LATE ENTRIES ACCEPTED. Via email to Tim Thomas [qldmgbashowmanager@gmail.com](mailto:qldmgbashowmanager@gmail.com) All original entry forms and fees MUST be handed in to the steward for each goat entered during check in time.

Animals without forms submitted and fees paid on the day will not be eligible to show.

**ENTRY FEES:** one \$30 stud/exhibitor fee, plus \$6 per entry per class. NO REFUNDS ALLOWED Studs with emailed entries will still be responsible to pay outstanding entry fees if not attending show.

**ELIGIBILITY, CONDITIONS, ANIMAL HEALTH & BIOSECURITY** conditions available on full Goat Program at [canungrashowsociety.org](http://canungrashowsociety.org)

## PRESENTATION CLASS

(Open to all breeds/ages)

A: Best Presented

## HANDLER SECTION

B: Junior Handler (up to 15 years)

C: Showmanship Handler (over 15 years)

## MILKING CLASSES

open to all does up to 60cm

D: First Lactation from 18 months (kidded) N B :  
Kidded does must not have any signs of discharge.  
Nigerian Dwarf from 12 months

E: Second and subsequent lactation any age (kidded)

BEST UDDER IN SHOW

## AUSTRALIAN MINIATURE GOATS

EAR & HEAD CLASSES

1. Classic Australian Miniature Head (Any Age)

DOE SECTION – all Does up to 57cm

2. Doe under 6 months

3. Doe 6 months & under 12 months

Ch & Res AUST MINI KID DOE

4. Doe 12 months & under 18 months

5. Doe 18 months & under 24 months

Ch & Res AUST MINI JUNIOR DOE

6. Doe 2 years & under 3 years

7. Doe 3 years & under 4 years

Ch & Res AUST MINI SENIOR DOE

8. Doe 4 years & under 5 years

9. Doe 5 years & over

Ch & Res AUST MINI VETERAN DOE

Buck SECTION – all Bucks up to 60cm

10. Buck under 6 months

11. Buck 6 months & under 12 months

Ch & Res AUST MINIATURE KID Buck

12. Buck 12 months & under 18 months

13. Buck 18 months & under 24 months

Ch & Res AUST MINI JUNIOR Buck

14. Buck 2 years & under 3 years

15. Buck 3 years & under 4 years

Ch & Res AUST MINI SENIOR Buck

16. Buck 4 years & under 5 years

17. Buck 5 years & over

Ch & Res AUST MINI VETERAN Buck

BEST AUSTRALIAN MINIATURE DOE

(Ch Kid, Junior, Senior & Veteran Does compete)

BEST AUSTRALIAN MINIATURE BUCK

(Ch Kid, Junior, Senior & Veteran Bucks compete)

RUNNER-UP BEST AUSTRALIAN MINIATURE DOE

RUNNER-UP BEST AUSTRALIAN MINIATURE BUCK

BEST OF BREED AUSTRALIAN MINIATURE

(Best Doe and Buck compete)

RUNNER-UP BEST OF BREED AUSTRALIAN MINIATURE

Wether SECTION – all Wethers up to 60cm

18. Wether under 6 months

19. Wether 6 months & under 12 months

Ch & Res AUST MINI KID Wether

20. Wether 12 months & under 18 months

21. Wether 18 months & under 24 months

Ch & Res AUST MINI JUNIOR Wether

22. Wether 2 years & under 3 years

23. Wether 3 years & under 4 years

Ch & Res AUST MINI SENIOR Wether

24. Wether 4 years & under 5 years

25. Wether 5 years & over

Ch & Res AUST MINI VETERAN Wether

BEST AUSTRALIAN MINIATURE WETHER (Ch kid, junior, senior and veteran wether compete)

RUNNER-UP BEST AUSTRALIAN MINIATURE WETHER

# AUSTRALIAN MINIATURE GOATS

## NIGERIAN DWARF GOATS

### EAR & HEAD CLASSES

26. Classic NIGERIAN DWARF Head (Any Age)

### DOE SECTION – all Does up to 57cm

27. Doe under 6 months

28. Doe 6 months & under 12 months

Ch & Res DWARF KID DOE

29. Doe 12 months & under 18 months

30. Doe 18 months & under 24 months

Ch & Res DWARF JUNIOR DOE

31. Doe 2 years & under 3 years

32. Doe 3 years & under 4 years

Ch & Res DWARF SENIOR DOE

33. Doe 4 years & under 5 years

34. Doe 5 years & over

Ch & Res DWARF VETERAN DOE

### Buck SECTION – all Bucks up to 60cm

35. Buck under 6 months

36. Buck 6 months & under 12 months

Ch & Res DWARF KID Buck

37. Buck 12 months & under 18 months

38. Buck 18 months & under 24 months

Champion & Res DWARF JUNIOR Buck

39. Buck 2 years & under 3 years

40. Buck 3 years & under 4 years

Ch & Res DWARF SENIOR Buck

41. Buck 4 years & under 5 years

42. Buck 5 years & over

Ch & Res DWARF VETERAN Buck

BEST NIGERIAN DWARF DOE

(Ch Kid, Junior, Senior & Veteran Does compete)

BEST NIGERIAN DWARF BUCK

(Ch Kid, Junior, Senior & Veteran Bucks compete)

RUNNER-UP BEST NIGERIAN DWARF DOE

RUNNER-UP BEST NIGERIAN DWARF BUCK

BEST OF BREED NIGERIAN DWARF (Best Doe and Buck compete)

RUNNER-UP BEST OF BREED NIGERIAN DWARF

### Wether SECTION – all Wethers up to 60cm

43. Wether under 6 months

44. Wether 6 months & under 12 months

Ch & Res DWARF KID Wether

45. Wether 12 months & under 18 months

46. Wether 18 months & under 24 months

Champion & Res DWARF JUNIOR Wether

47. Wether 2 years & under 3 years

48. Wether 3 years & under 4 years

Ch & Res DWARF SENIOR Wether

49. Wether 4 years & under 5 years

50. Wether 5 years & over

Ch & Res DWARF VETERAN Wether

BEST NIGERIAN DWARF WETHER

(Ch kid, junior, senior and veteran wether compete)

RUNNER-UP BEST NIGERIAN DWARF WETHER

## NUWBY GOATS

### EAR & HEAD CLASSES

51. Classic NUWBY Head (Any Age)

BEST OF BREED PYGMY (Best Doe and Buck compete)

RUNNER-UP BEST OF BREED PYGMY

### DOE SECTION – all Does up to 60cm

52. Doe under 6 months

53. Doe 6 months & under 12 months

Ch & Res NUWBY KID DOE

54. Doe 12 months & under 18 months

55. Doe 18 months & under 24 months

Ch & Res NUWBY JUNIOR DOE

56. Doe 2 years & under 3 years

57. Doe 3 years & under 4 years

Ch & Res NUWBY SENIOR DOE

58. Doe 4 years & under 5 years

59. Doe 5 years & over

Ch & Res NUWBY VETERAN DOE

### Buck SECTION – all Bucks up to 63.5cm

60. Buck under 6 months

61. Buck 6 months & under 12 months

Ch & Res NUWBY KID Buck



# AUSTRALIAN MINIATURE GOATS

62. Buck 12 months & under 18 months

63. Buck 18 months & under 24 months

Ch & Res NUWBY JUNIOR Buck

64. Buck 2 years & under 3 years

65. Buck 3 years & under 4 years

Ch & Res NUWBY SENIOR Buck

66. Buck 4 years & under 5 years

67. Buck 5 years & over

Ch & Res NUWBY VETERAN Buck

BEST NUWBY DOE

(Ch Kid, Junior, Senior & Veteran Does compete)

BEST NUWBY BUCK

(Ch Kid, Junior, Senior & Veteran Bucks compete)

RUNNER-UP BEST NUWBY DOE

RUNNER-UP BEST NUWBY BUCK

BEST OF BREED NUWBY (Best Doe and Buck compete)

RUNNER-UP BEST OF BREED NUWBY

Wether SECTION – all Wethers up to 63.5cm

68. Wether under 6 months

69. Wether 6 months & under 12 months

Ch & Res NUWBY KID Wether

70. Wether 12 months & under 18 months

71. Wether 18 months & under 24 months

Ch & Res NUWBY JUNIOR Wether

72. Wether 2 years & under 3 years

73. Wether 3 years & under 4 years

Ch & Res NUWBY SENIOR Wether

74. Wether 4 years & under 5 years

75. Wether 5 years & over

Ch & Res NUWBY VETERAN Wether

BEST NUWBY WETHER (Ch kid, junior, senior and veteran wether compete)

RUNNER-UP BEST NUWBY WETHER

PYGMY GOATS

EAR & HEAD CLASSES

76. Classic PYGMY Head (Any Age)

DOE SECTION – all does up to 57cm

77. Doe under 6 months

78. Doe 6 months & under 12 months

Ch & Res PYGMY KID DOE

79. Doe 12 months & under 18 months

80. Doe 18 months & under 24 months

Ch & Res PYGMY JUNIOR DOE

81. Doe 2 years & under 3 years

82. Doe 3 years & under 4 years

Ch & Res PYGMY SENIOR DOE

83. Doe 4 years & under 5 years

84. Doe 5 years & over

Ch & Res PYGMY VETERAN DOE

Buck SECTION – all Bucks up to 60cm

85. Buck under 6 months

86. Buck 6 months & under 12 months

Ch & Res PYGMY KID Buck

87. Buck 12 months & under 18 months

88. Buck 18 months & under 24 months

Ch & Res PYGMY JUNIOR Buck

89. Buck 2 years & under 3 years

90. Buck 3 years & under 4 years

Ch & Res PYGMY SENIOR Buck

91. Buck 4 years & under 5 years

92. Buck 5 years & over

Ch & Res PYGMY VETERAN Buck

BEST PYGMY DOE

(Ch Kid, Junior, Senior & Veteran Does compete)

BEST PYGMY BUCK

(Ch Kid, Junior, Senior & Veteran Bucks compete)

RUNNER-UP BEST PYGMY DOE

RUNNER-UP BEST PYGMY BUCK

Pygmy Wether SECTION – all Wethers up to 60cm

93. Wether under 6 months

94. Wether 6 months & under 12 months

Ch & Res PYGMY KID Wether

95. Wether 12 months & under 18 months

96. Wether 18 months & under 24 months

Ch & Res PYGMY JUNIOR Wether

97. Wether 2 years & under 3 years

98. Wether 3 years & under 4 years

Ch & Res PYGMY SENIOR Wether

99. Wether 4 years & under 5 years

100. Wether 5 years & over

Ch & Res PYGMY VETERAN Wether

BEST PYGMY WETHER

(Ch kid, junior, senior and veteran wether compete)

RUNNER-UP BEST PYGMY WETHER





# AUSTRALIAN MINIATURE GOATS

## GROUP SECTION (Open to all breeds)

F: Breeders Pair (Two animals from the same exhibitor, same Stud name, not necessarily related, judged with emphasis placed on

G: Sire or Dam & one progeny (Two animals from the same exhibitor judged on quality, conformation, & uniformity of type.

BEST IN SHOW (each Best of Breed competes)

RUNNER-UP BEST IN SHOW (selected from remaining BOB in BIS line up)

BEST WETHER IN SHOW (each Best Wether of Breed competes)

RUNNER-UP BEST WETHER IN SHOW (selected from remaining BW in BWIS line up)

MOST SUCCESSFUL EXHIBITOR (Automatic entry)

MOST SUCCESSFUL BREEDER (Automatic entry)

PLEASE NOTE: Signing of your entry form indicates that you and any person participating with you, agree to the following:

I/we agree to compete/exhibit/participate at the Show/event at our own risk and assume all responsibility for our helpers/handlers/guests; agree not to make any claim against the MGBAA or any other person involved in organising/conducting this event, for any injury or loss sustained to us, our property or the livestock exhibited under our care at this event; agree to compete/exhibit at our own risk and to indemnify and keep indemnified the MGBAA, together with any other organization or person involved in the conduct of any show/event against all claims, suits, actions, or demands, which may be brought in respect of any injury or other loss

sustained to us, our property, or the livestock exhibited under our care in the course of competing/exhibiting/participating at the show/event and agree to exonerate the committee of management of the MGBAA together with any other organization or person involved in the conduct of any event from all loss or injury to us, our property or the livestock exhibit under our care whether due to alleged negligence or otherwise.

Miniature Goat Breeder Association of Australia Inc. (IAN-IA35943) Office: 149 Four Mile Land Boyland, QLD 4275



## ENTERTAINMENT

- Woodchop • Bushmans Challenge
- Ashtons Entertainment - Globe Act with fire display and the Wheel of Steel
- Amazing Animals 2 U • Fireworks 7:00pm
  - HLS Horse Trick riding
  - Circus Performance and workshop
- Urban Reptiles • Pig races • Carnival ride



**My Country Escape**  
FASHION & HOMEWARES BOUTIQUE



**OPENING HOURS**  
Monday-Friday 9am - 5pm  
Saturday, Sunday 9am - 3pm

Ph: 07 5543 4042  
29 Christie Street, Canungra  
[www.mycountryescape.com.au](http://www.mycountryescape.com.au)











# NOW BUILDINGS UTE MUSTER

**STEWARD** - Ree Lister, Ph: 0450215176 Sponsored by Now Buildings

**Champion UTE OF THE SHOW** prize money \$200 - Winners of Classes 5050 to 5055 eligible to enter

**Reserve Champion UTE OF THE SHOW** prize money \$75 - Winners of Classes 5050 to 5055 eligible to enter

Entry fee: \$5 per class

1st place \$50 2nd place \$30 3rd place \$15

## Conditions of Entry

- Entries close at 12:00noon on Show Day, 26th August 2023. Judging commences 2pm.
- Utes can be entered in more than one class and all utes are eligible for Class 5056 to 5065.
- Ute Muster will be held at Canungra Showgrounds, entry via main gate, exhibit held in Rodeo field.
- ALL ALCOHOL IS TO BE PURCHASED ON SITE & KEPT IN DESIGNATED AREA. VEHICLES AND ESKIES WILL BE SEARCHED

## Ute Muster

Each class is \$5 per class.

1st place \$50 2nd place \$30 3rd place \$15

Class 5050 Best Street Ute

Class 5051 Best Work Ute

Class 5052 Best Chicks Ute

Class 5053 Best 4X4 Ute

Class 5054 Best Classic Ute

Class 5055 Best B n S Ute

## Ute Muster - Novelty Classes

Entry: Free.

First Place: Ribbon.

Class 5056 Best Town & Country Ute

Class 5057 Most Stickers

Class 5058 Best Interior

Class 5059 Biggest Bullbar

Class 5060 Best Stereo Setup

Class 5061 Most Elaborate Mags

Class 5062 Best Presented Engine Bay

Class 5063 Best Paint Work

Class 5064 Most Flags

Class 5065 Best Bogan Ute



**DON'T SETTLE FOR SECOND BEST**

BUY A HIGH-QUALITY SHED FROM AUSTRALIA'S LARGEST WHOLESALE SHED COMPANY

**ABN HOLDERS ONLY BUY FROM US NOW & YOU COULD SAVE THOUSANDS**

**THE NOW BUILDINGS ADVANTAGE**

- ✓ 50 YEARS INDUSTRY EXPERIENCE
- ✓ HIGH WIND DESIGN
- ✓ HIGHEST QUALITY COMPONENTS
- ✓ SITE-SPECIFIC ENGINEERING
- ✓ WHOLESAL PRICES
- ✓ EASE OF CONSTRUCTION
- ✓ CUSTOMER SATISFACTION
- ✓ INDEPENDENT REFERRAL BUILDERS

**THOUSANDS OF HAPPY CUSTOMERS AROUND AUSTRALIA**

★★★★★

4.9 OUT OF 5 STARS ON GOOGLE

**100% AUSTRALIAN STEEL 100% AUSTRALIAN MADE 100% AUSTRALIAN FAMILY OWNED**

**NOW BUILDINGS**  
Australia's Leading Wholesale Shed Company

CALL 1300 559 668  
[www.nowbuildings.com.au](http://www.nowbuildings.com.au)

# ENTRY FORM

Owner's Name: .....

Address: .....

.....

..... Phone No:.....

Make:..... Model: .....

Colour..... Rego Number:.....

Classes Entered:.....

Ute Number:.....

## Leading the way in comfortable dentistry!

- HAPPY GAS
- TWILIGHT SEDATION
- DENTAL IMPLANTS
- CUSTOM MADE CROWNS
- PERSONALISED SERVICES

CALL US NOW AND FIND OUT HOW WE CAN HELP YOU!

**(07) 5543 5299**



Canungra Dental



SUPPORTING THE SCENIC RIM



# CANUNGRA HOTEL

Cold beer, great food, good friends



HELL YEAR TRIVIA PRESENTS

# TRIVIA

*Thursdays*

11th & 25th August

**WIN CASH + PRIZES**

FREE ENTRY  
REGISTER FROM 5PM - STARTS @ 6:30PM  
ALL PIZZAS \$10  
TEAM BOOKINGS AVAILABLE! CALL 55435233  
TO RESERVE YOUR TABLE

**CANUNGRA HOTEL**  
Cold beer, great food, good friends

## CANUNGRA HOTEL

# SATURDAY

*- Best -*

**LIVE & LOUD**  
FOX SPORTS LIVE FROM 10AM

**TAB & GAMING**  
OPEN 10AM

**RESTAURANT & BEER GARDEN**  
LUNCH FROM 12PM

FREE JUKEBOX FROM 5PM | FREE POOL FROM 5PM

COURTESY BUS BOOKINGS 5543 5233

every **FRIDAY**

## CANUNGRA HOTEL

Cold beer, great food, good friends

**4 DRAWS FRIDAY**  
4.30PM, 5PM, 5.30PM & 6PM

**\$500 CASH**  
JACKPOT

BUY A DRINK GET A TICKET  
FOR YOUR CHANCE TO SPIN THE WHEEL  
& WALK AWAY WITH CASH!

We practice the responsible enjoyment of gaming.  
Terms and Conditions apply. See staff for details.

P 07 5543 5233 [www.canungrahotel.com.au](http://www.canungrahotel.com.au)

RESTAURANT - BARS - ACCOMMODATION - BEER GARDEN  
TAB - GAMING - LIVE ENTERTAINMENT - COURTESY BUS

Bookings & Enquiries 07 5543 5233  
18 Kidston Street Canungra Qld 4275

